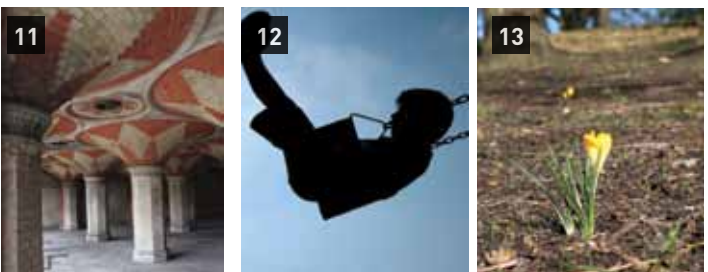
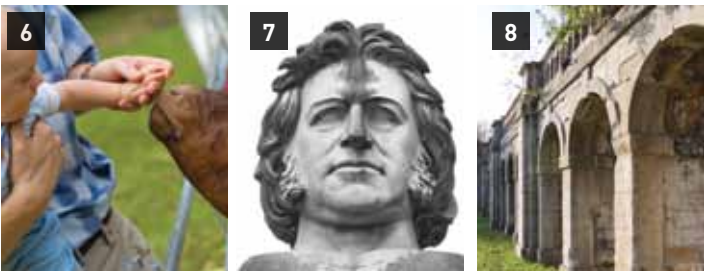


Points of interest

This map is an illustrated guide ONLY.
© Crown copyright and database rights 2012.
Ordnance Survey 100017661.



- 1 Prehistoric monsters (Dinosaurs)**
31, Grade 1 listed prehistoric creatures roaming among the trees and lake. For audio trail visit www.audiotrails.co.uk/dinosaurs
- 2 Royal Naval Volunteer Reserve Trophy**
Commemorating the officers and men in the Great War.
- 3 The Athletic Stadium**
Host to international athletics meets, and football and rugby matches.
- 4 National Sports Centre**
A unique London venue, and Grade II* listed building with Olympic Pool, steeped in sporting tradition.

- 5 Concert Bowl**
Stage design by Ian Ritchie Architects.
- 6 Capel Manor College and Children's Farm**
Opening times 12noon - 4pm. Closed on Wednesdays
- 7 Joseph Paxton's Bust (Grade II listed)**
- 8 The Terraces**
Grade II listed. Originally an impressive setting for the Palace.
- 9 The Grand Central Walk**
Originally linked to the Palace building.

- 10 The Maze**
Replanted in 1987 to the original layout and upgraded in 2009 to mark the Girl Guiding UK's centenary.
- 11 Subway (Organised visits only)**
Grade II remains of original first class High Level Station Entrance.
- 12 Children's play area**
A safe enclosure for children to play.
- 13 The Vale (The site of previous house and garden)**
An area of woodland with some of the oldest trees in the park.
- 14 Fishing lake (Private)**
Originally the intermediate reservoir for Paxton's grand system of waterworks and now a private fishing lake

- 15 Crystal Palace Museum**
Open at weekends. Winter opening 11.00am - 3.00 pm, summer opening 11.00am- 4.00pm
- 16 Crystal Palace Railway Station**
Original station for accessing the park.
- 17 Central Steps**
Impressive steps originally leading to the Palace.
- 18 Geological Strata**
Display of rock strata, formations and waterfalls.
- 19 Lower Lake**
Originally the lower reservoir for Paxton's grand system of waterworks.