



Archway Campus

2-10 Highgate Hill, Islington, N19 5LW



SevenCapital



Contents

Page 3 – **Introduction**

Page 4 – **Unit Base**

Page 5 – **Set Build Space +
Prop Store**

Page 6 – **Holborn Union**

Page 17 – **Furnival**

Page 23 – **Clerkenwell**

Page 26 – **Charterhouse**

Page 27 – **Staple**

E: archwaycampus@filmfixer.co.uk

T: 020 3904 4545

what3words: [///fetch.stand.fled](https://www.what3words.com/fetch/stand/fled)



Introduction

This vast site was built as an infirmary in the Victorian period and most recently operated as a campus for University College London and Middlesex University. The derelict six buildings are spread over 160,000sqft and are available day and night for filming. The superb multi-use space could double as a hospital, doctors, school, police station, community centre, municipal offices, canteen, laboratories or a sports centre; it has a unit base to service shoots plus set build space and a prop store.

Archway Campus is available 'as found' – as a disused site there are no toilets, water or electricity supply or heating and the lighting only works in some areas of the building.

Same day recces are available upon request.



Unit Base

The 1,500sqm parking area off Archway Road is suitable for small and medium sized units as well as crew car or technical vehicle only parking.



Set Build Space + Prop Store

The former sports hall is available for short or long term hires for set-builds. The space is 7.3m tall and dimensions are 12.7m x 9.3m.



This wing - the Holborn Union - is the largest with a span of 100m across 8,000sqm / 86,200sqft. The Union has four floors as well as an extensive basement and clock tower. The building has a huge reception with security gates and a visually interesting middle stairwell. Also on site are numerous offices in a variety of styles, a large canteen, doctors rooms, balconies, medical rooms and period lobbies.



THE HUB MENU

A SELECTION OF HOT PANINIS from 3.40	BAKED POTATOES with cheddar & onion from 1.25	BASQUETTES with cheddar & onion from 3.50
SALADS from 4.50	SANDWICHES from 2.95	HOT MEALS from 4.50
PLATTERS from 4.90	SANDWICHES from 3.95	DAILY SPECIALS from 12.00
		BREAKFAST SNACKS from 10.30

OTHER TASTY SNACKS
FROM JUST 45p!

A SELECTION OF HOT DRINKS

Holborn Union





Waiting Room set





Hospital Wing







Canteen



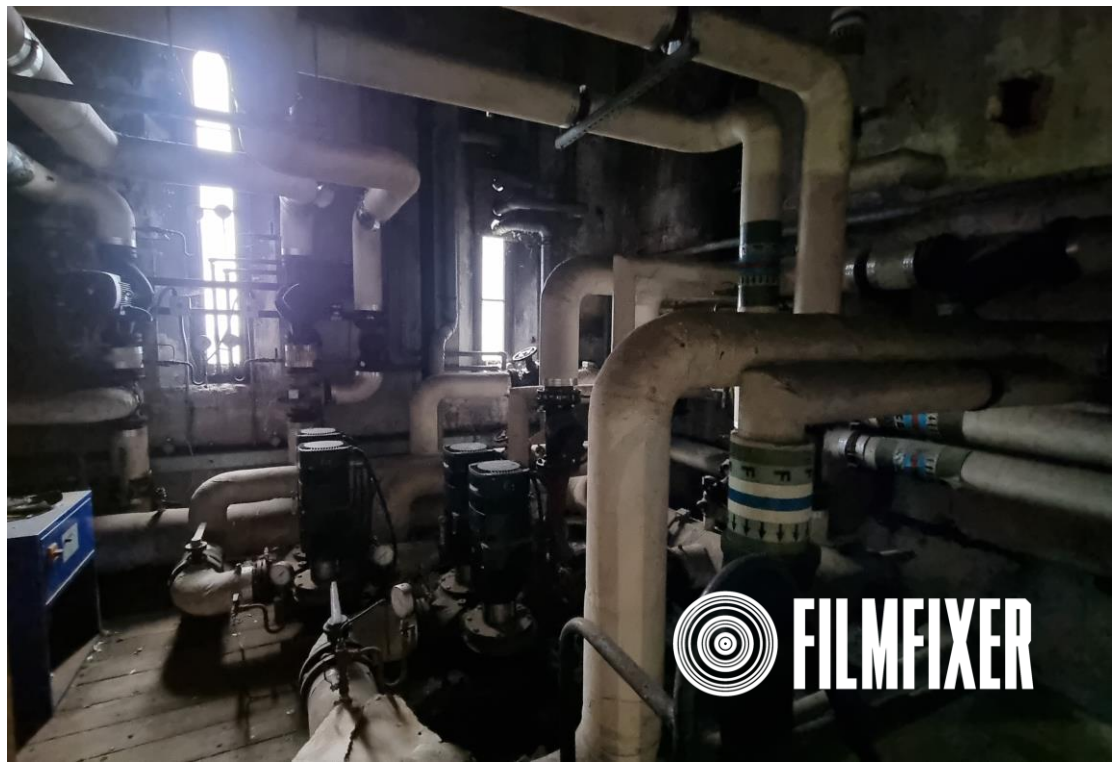












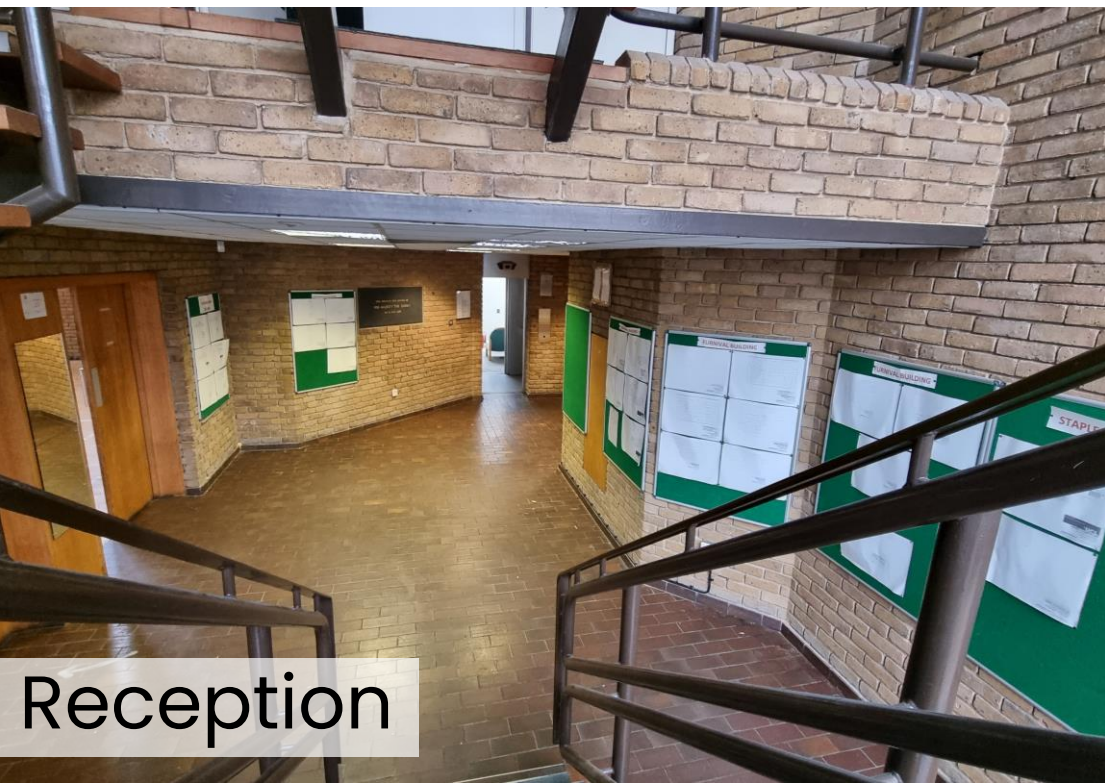
Clock Tower



This detached wing - the Furnival Building - was an addition in 1978 and is spread across seven floors totalling 3,500sqm / 37,800sqft. The building has a tall gym perfect for set builds as well as a lecture theatre. Also on site are offices, changing rooms, lecture rooms and a visually interesting staircase which resembles a school.

Furnival Building





Reception





Lecture Theatre







Clerkenwell Building

The Clerkenwell Building is the south wing which was built in 1879 and has a floor area of 26,000sqft or 2,400sqm. The building has four floors and used to be a sex clinic – it comprises of laboratories, clinics and offices.







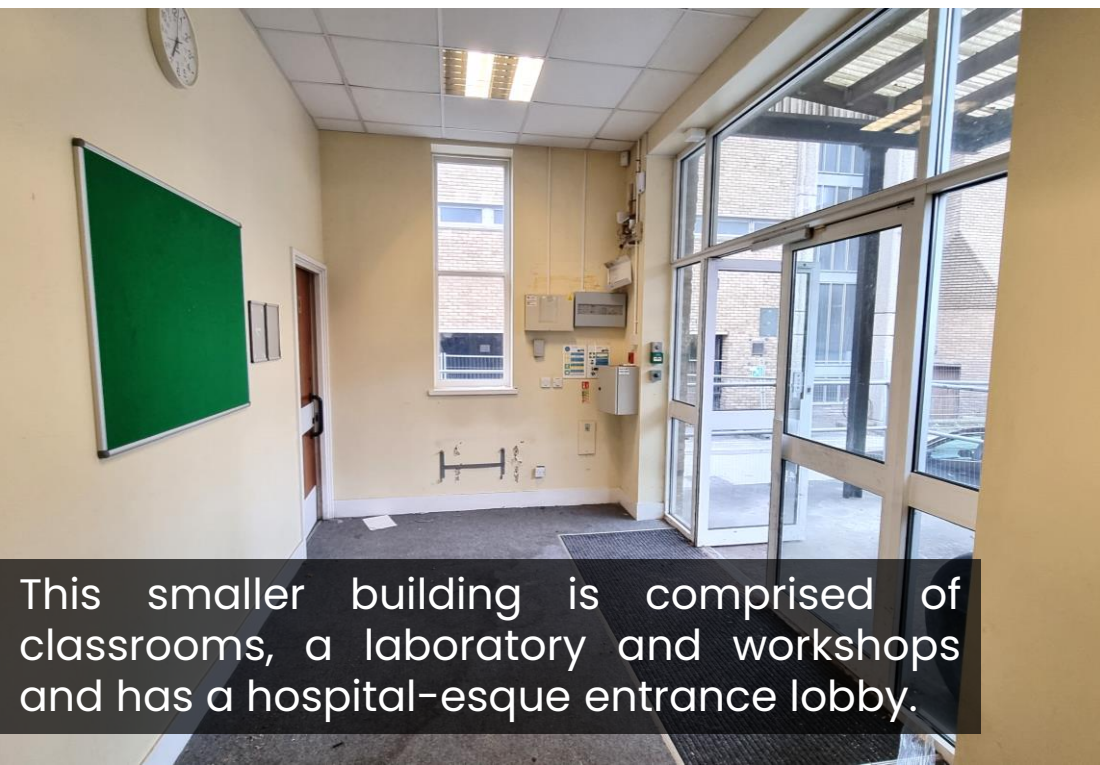


This building was predominantly nurses' accommodation and offices. It is the north wing and is just over 1,000sqm / 11,000sqft.





Staple Building



This smaller building is comprised of classrooms, a laboratory and workshops and has a hospital-esque entrance lobby.





020 3904 4545 | archwaycampus@filmfixer.co.uk

www.filmfixer.co.uk