

LEE PARK WAY

Pickett's Lock Lane, Edmonton, London Borough of Enfield, N9 0AT

Introduction

Lee Park Way is a 1.2km private rural road within the Lee Valley Regional Park in North-East London. Fully controllable, the road runs under a number of huge pylons and in certain sections has two lanes. Part of the road has permanent bollards, and some have removable bollards. Halfway down the road sits a small car park and to its east is the River Lee Navigation providing stunning scenic views. Lee Valley Athletics Centre is at the north end of the road where a number of spaces can be used for green rooms plus their service road can house unit bases. On-foot recces can be conducted without permission (access via the north end).

To apply, please submit via [FilmApp here](#).

Address: Pickett's Lock Lane, Edmonton, Enfield, N9 OAT

What3Words: ///pink.ends.tag



LEE PARK WAY: FEES AND CHARGES



Filming			
CREW SIZE	ADMIN FEE	LOCATION FEE	
Student/ Charity/ Low budget	From £36	Half Day	On request
		Full Day	On request
Small (1-15)	From £90	Half Day	£65 - £130 per hour
		Full Day	£65 - £130 per hour
Medium (16 -25)	From £160	Half Day	£300 - £1,400
		Full Day	£685 - £3,000
Large (25 - 50)	From £250	Half Day	£1,300 - £4,000
		Full Day	£1,950 - £6,000
Very Large (51+)	From £360	Half Day	£2,000 - £15,000
		Full Day	£3,200 - £20,000

LEAD IN TIME: 3 working days
 (Please allow 10+ working days for large scale or complex shoots)
 Fees are calculated based on the location, the number of people, length of time and impact on site, as well as the time spent organising the shoot internally.
All rates are exclusive of VAT.

Unit Base		
TYPE	COST	NOTES
Unit Base (Lee Valley Athletics Centre - 175m slip road)	£750 - £1,500	per day
Green rooms (Lee Valley Athletics Centre - conference rooms + toilets)	£30	per room per hour

Photography		
CREW SIZE	ADMIN FEE	LOCATION FEE
Small (up to 15)	From £180	£65 - £150 per hour
Large (over 15)	From £240	£165 - £400 per hour

A returnable damage deposit may be required. If terms and conditions are not adhered to or if damage occurs, the security deposit may not be returned. Calculated on a case-by-case basis.

Please note, Lee Park Way incurs an additional access fee of £500+VAT to cover the cost of moving and replacing the concrete bollards which prevent vehicle access.

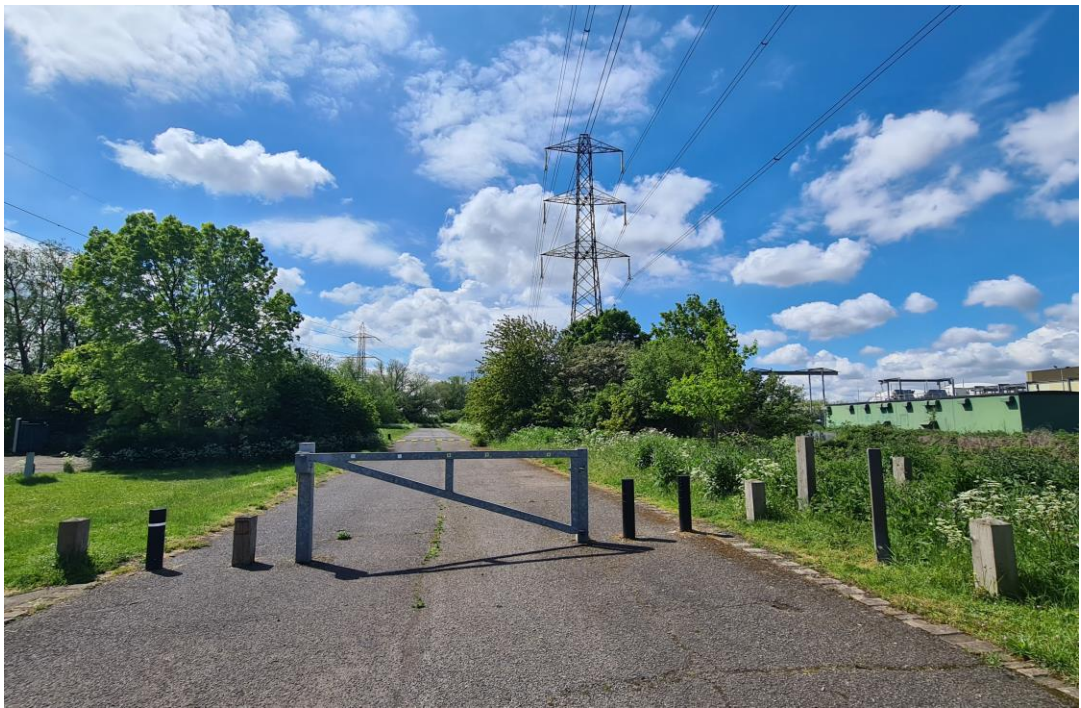
Crew sizes are inclusive of cast, crew and contributors
 *Explained in more details on the next page



Rate Card Terms

- Due to previous instances of illegal access, concrete blocks have been placed at the north end of the road to stop vehicle access. Productions must cover the costs of these blocks to be removed and reinstated after the shoot.
- 'Crew size' should include cast, models, artists, presenters, contributors, chaperones and agency.
- Admin fees are calculated per hour of administrative time. The figures quoted are a minimum charge and may be multiplied accordingly for intensive applications.
- Students must provide proof to be eligible for discounted rates. "Micro-budget Indies" are classed as low or no-budget, non-commercial productions (i.e. unfunded films, personal portfolios, nonprofit social media shoots etc).
- Charities producing content in-house (without contracting an agency) may be eligible for discounts – please email your brief to obtain a quote.
- For all applications, payment must be made before the shoot. Payment can be made by card online, or by BACS with proof of payment or remittance. Please be aware that some charges may still apply to cancelled applications if already processed.
- You must have Public Liability Insurance with a minimum cover of £5 million in order to gain a licence to shoot.
- If terms and conditions are not adhered to, the security deposit may not be returned. Additional terms and conditions may be introduced when further requests are able to be implemented

Lee Park Way







Lee Park Way



www.leevalleyfilmoffice.co.uk

T: 020 3904 4545

E: info@leevalleyfilmoffice.co.uk