



Unit Bases

Bristol City Council

1. Amphitheatre and Waterfront Square (see images below)

We can fit two units on here, if necessary but it is also our main events space so there can be events in the warmer months.

Please note that mains power is available at this site. Bristol Film Office can put you in touch with the appropriate Bristol City Council department to discuss this further.

Google Maps: <https://goo.gl/maps/Eut4of9b4EkF3yCD6>

Total area measures 3,328m² (see screenshot below)

2. Church Lodge, Ashton Court

Google Maps: <https://maps.app.goo.gl/EWYwyEJKUy5DwGjn7>

what3words: [///tapesoberline](https://www.what3words.com/#!/tapesoberline)

3. Redcliffe Wharf (see images below)

Google Maps: <https://maps.app.goo.gl/YPbQTwH48kDg32dA6>

what3words: [///rapidunlesscotton](https://www.what3words.com/#!/rapidunlesscotton)

Total area measures 3,162m² (see screenshot below)

4. The Bottle Yard Studios

Google Maps: <https://maps.app.goo.gl/wEqngyZgKcB5YkAC7>

what3words: [///visaretailshine](https://www.what3words.com/#!/visaretailshine)

Privately-owned

1. Gardiner Haskins (see images below)

Google Maps: <https://goo.gl/maps/dqv25T7p3TFi2gSPA>

what3words: [///alsochipsgown](https://www.what3words.com/#!/alsochipsgown)

2. Showcase Bristol Avonmeads cinema

Google Maps: <https://goo.gl/maps/iPS9m1mmRQq5HTW76>

what3words: [///wheelsburstchart](https://www.what3words.com/#!/wheelsburstchart)

3. Avonmouth Old Boys RFC

Google Maps: <https://maps.app.goo.gl/JxUZebnd9LVJZsyRA>

what3words: [///decent.snow.code](https://www.what3words.com/#!/decent.snow.code)

4. Memorial Stadium (Bristol Rovers FC)

Google Maps: <https://goo.gl/maps/cF8gJ12HwzYBBUVt5>

What3words: [///assetrecallcomposers](https://www.what3words.com/#!/assetrecallcomposers)

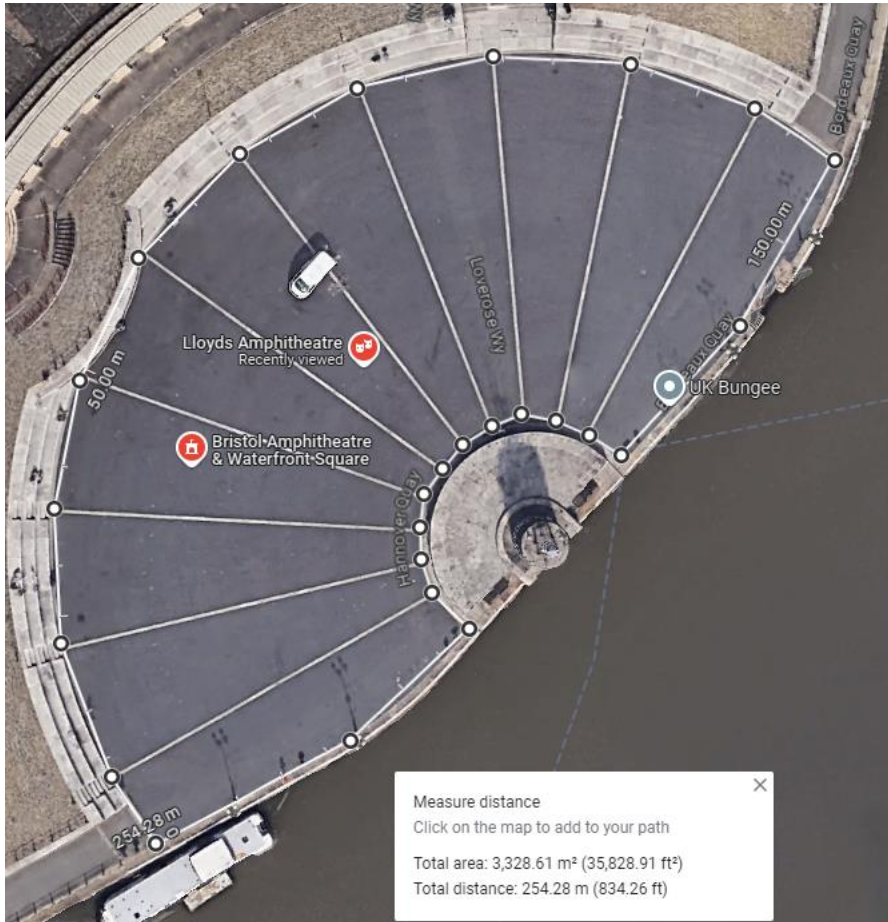
If you'd like to enquire about a unit base, please contact: bristolfilmoffice@bristol.gov.uk

Other parking options: [Bristol Grammar School](#), [Arnos Manor Hotel](#) and [St Annes House](#).

Bristol Film Office

Bristol City Council – Culture and Creative Industries Team
The Bottle Yard Studios, Whitchurch Lane, Bristol, BS14 0BH
T: +44 (0)117 922 3958 E: bristolfilmoffice@bristol.gov.uk

Amphitheatre and Waterfront Square

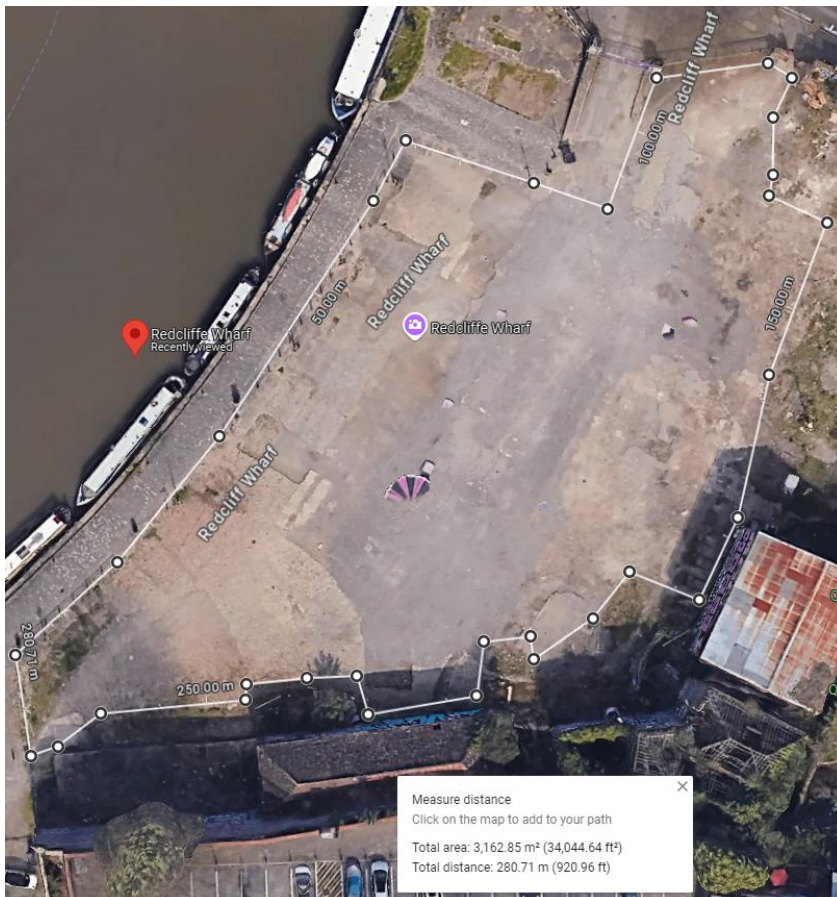


Bristol Film Office

Bristol City Council – Culture and Creative Industries Team
The Bottle Yard Studios, Whitchurch Lane, Bristol, BS14 0BH
T: +44 (0)117 922 3958 E: bristolfilloffice@bristol.gov.uk



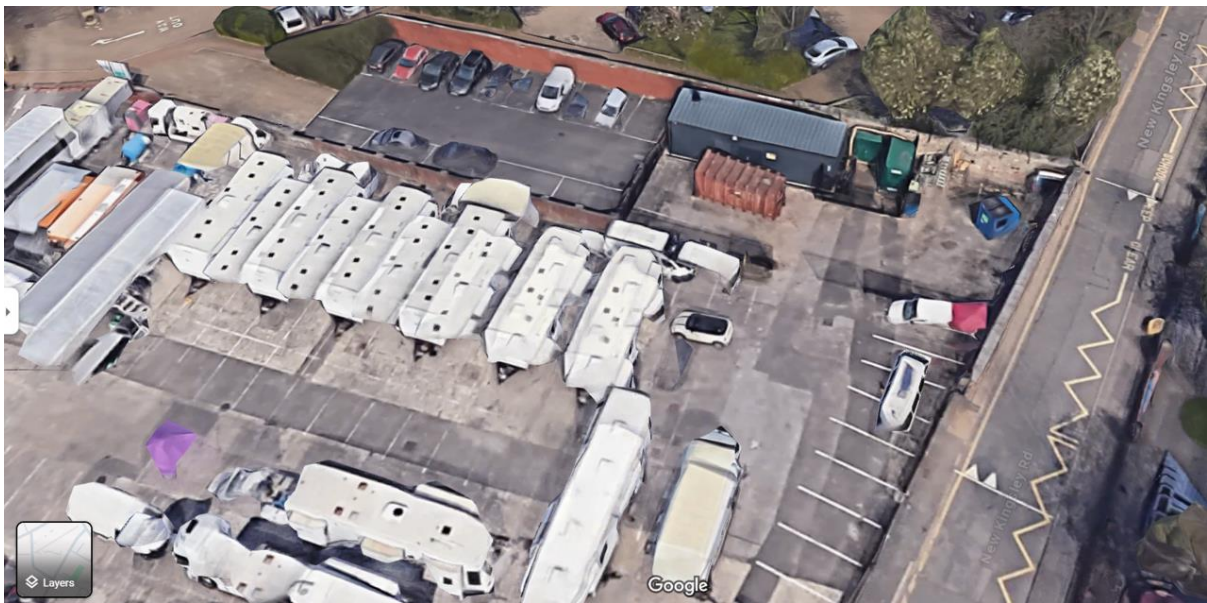
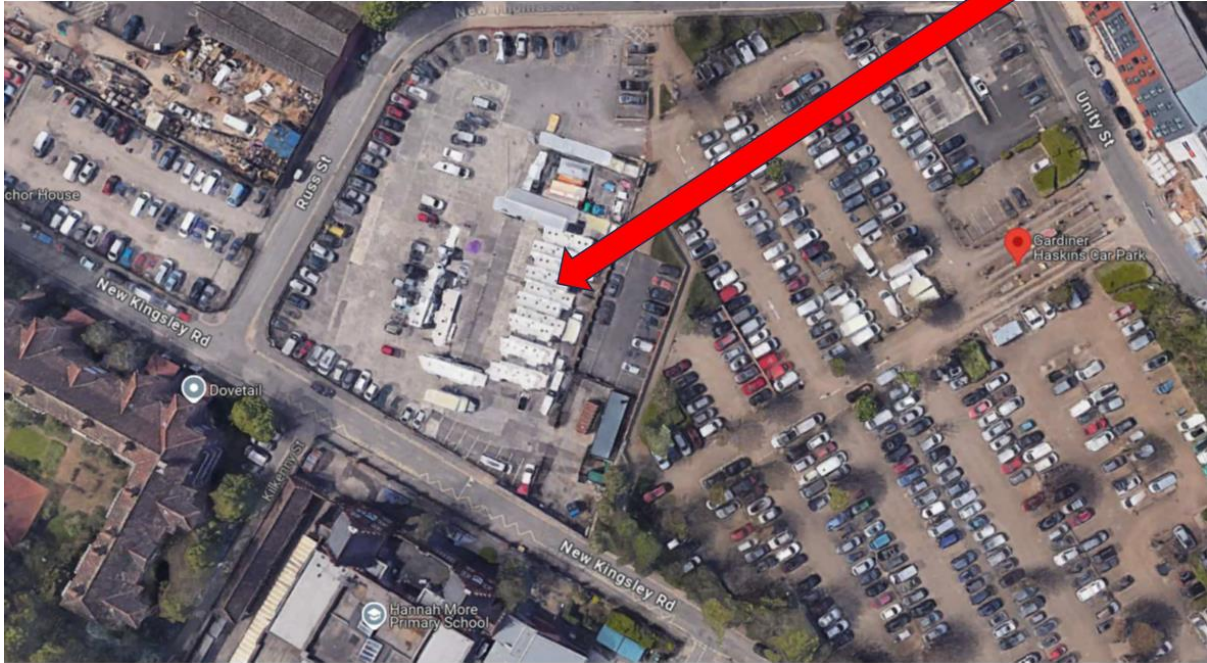
Redcliffe Wharf



Bristol Film Office

Bristol City Council – Culture and Creative Industries Team
The Bottle Yard Studios, Whitchurch Lane, Bristol, BS14 0BH
T: +44 (0)117 922 3958 E: bristolfilloffice@bristol.gov.uk

Gardiner Haskins



Last updated 28/03/2025

Bristol Film Office

Bristol City Council – Culture and Creative Industries Team
The Bottle Yard Studios, Whitchurch Lane, Bristol, BS14 0BH
T: +44 (0)117 922 3958 E: bristolfilloffice@bristol.gov.uk