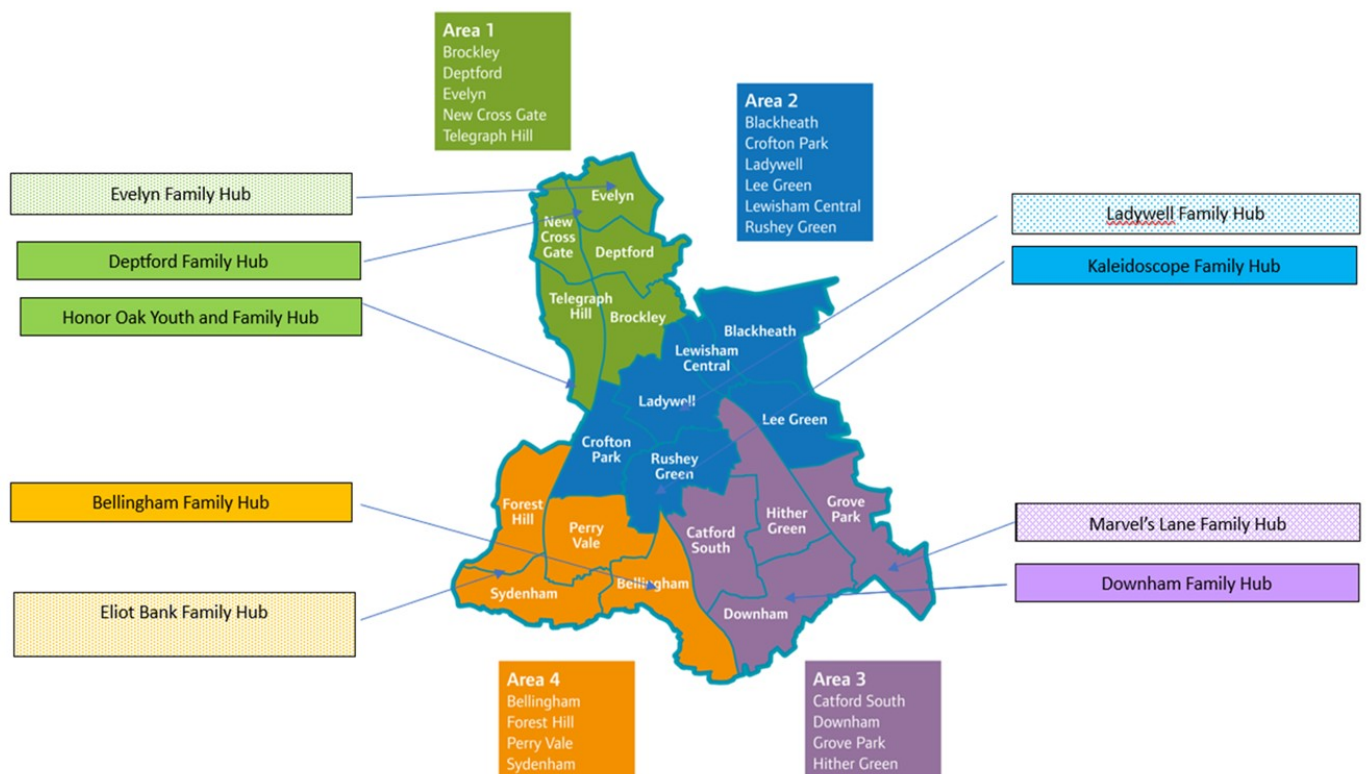


# Family Hubs Lewisham



**Our mission is to help all families in Lewisham to connect, grow and thrive.** Family Hubs offer the right help, in the right place, at the right time by offering services and support for all families with children aged 0 – 19 (or 25 with SEND) and extra support is available for families during pregnancy and in your baby's first years. We have now integrated our Children and Family Centres into our Family Hub offer.

Family Hubs are welcoming, friendly and safe spaces that families and young people feel they belong to and can connect and grow to be what they want to be. Family Hubs are great places to get advice, support and guidance for you and your family from pregnancy to young people turning 19 (or 25 with a special education need or disability).



The Hubs provide access to professionals such as family navigators, early years practitioners, health visitors, midwives and a variety of other services such as advice on benefits or employment. We also welcome people from the community to set up their own groups or activities within Family Hub buildings.

**Across the borough these are 9 Hubs with meeting rooms, play rooms and office spaces available to book for courses and workshops.**

**Please see each Hubs individual information for details of the spaces available and how to book.**

**You can also find out more about our services and download our timetables on our website:**

**[lewishamfamilyhubs.org.uk](http://lewishamfamilyhubs.org.uk)**

## Deptford Family Hub

Alverton Street, SE8 5NH  
020 8692 3653

To book email

Deptford.Family.Hub@lewisham.gov.uk

Link to the google map:

<https://maps.app.goo.gl/ApehrQ6FUD8uNGqb9>



## Building and room information

- Free onsite parking, including disabled parking
  - No charges for booking
- Buggy parking outside entrance (within premises)
- All rooms have privacy blinds except for creche room

### Deptford Family Hub is set over two floors

On ground floor is: the reception area, accessible toilet, fire exits, large hall, lift and stairs to first floor.



### LARGE HALL

- TOYS AND OPEN PLAY AREA
- SOFAS AND TABLE
- KITCHEN
- TOILET
- LAUNDRY FACILITIES
- DONATION HUB ACCESSED BY STAIR-CASE
- FIRE EXIT

On the second floor is  
accessible toilets, training room, hot desk area ,  
the crèche room, medical room, office and family therapy room.



#### **TRAINING ROOM – CAPACITY 20-30**

- 5 LARGE TABLES WITH SEATS
- PROJECTOR/SCREEN
- FLIPCHART BOARD AND PAPER
- KITCHENETTE
- TOILET
- FIRE EXIT

#### **HOT DESK AREA**

- CAPACITY 4
- 4 DESKS WITH MONITORS AND SOCKETS
- LEWISHAM COUNCIL PRINTER



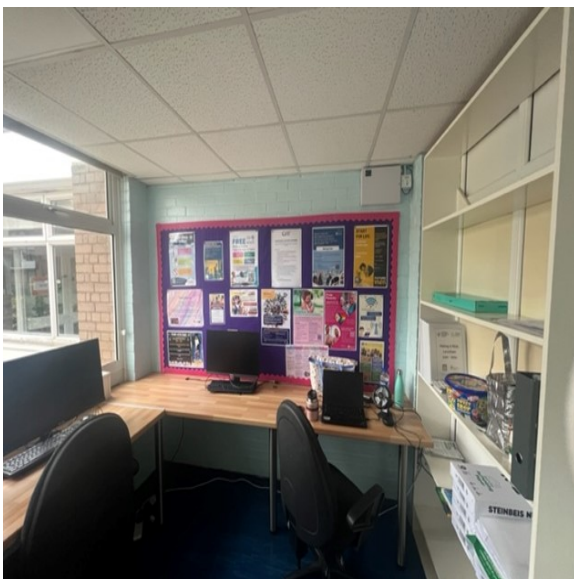
#### **CRECHE**

- TOYS AND MULTIPLE PLAY AREAS
- LARGE MEETING TABLE
- TOILET
- KITCHEN
- FIRE EXIT



## **MEDICAL ROOM**

- CAPACITY 3 OR 4
- SMALL DESK AND CHAIRS
- MEDICAL EQUIPMENT



## **FAMILY THRIVE OFFICE**

- CAPACITY 3
- DESKS, MONITORS, SOCKETS

## **THERAPY ROOM**

- CAPACITY 3
- SOFA
- SMALL DESK AND CHAIR



## Evelyn Family Hub

231 Grove Street, SE8 3PZ  
07720 152905

### To book email

[Evelyn.Family.Hub@lewisham.gov.uk](mailto:Evelyn.Family.Hub@lewisham.gov.uk)

### Link to the google map:

<https://maps.app.goo.gl/dQDUNBheqhVQ18a58>



## Building and room information

- Free onsite parking (limited spaces)
  - No charges for booking
  - Buggy parking in foyer
- Nearby travel from Surrey Quays Overground Station, 199 bus stops directly outside and 47 bus stops 10 min walk away

### Facilities include

Toilets x5 including 1 disabled  
Water cooler  
Kitchenette  
Fire Exits x5

### Rooms

Playroom/creche—has privacy blinds  
Meeting Room/Training—has frosted windows  
Reception with waiting area  
Office  
Kitchenette



## RECEPTION/ FOYER

- SOFA
- 2 ARMCHAIRS
- ROCKING  
CHAIR
- FIRE EXIT



## KITCHENETTE

- FRIDGE
- MICROWAVE
- TOASTER
- KETTLE
- URN ON  
REQUEST

## PLAYROOM/CRECHE (MAX 12)

**PLEASE NOTE THIS ROOM IS USED FOR  
SESSIONS THAT RUN WEEKLY – SPEAK TO  
RECEPTIONIST REGARDING BOOKING IT.**

- TOYS AND OPEN PLAY AREA
- TABLES
- CHILDRENS TOILET & BABY CHANGE
- LAUNDRY FACILITIES
- GARDEN
- FIRE EXIT





## MEETING ROOM/TRAINING ROOM (MAX 10)

**PLEASE NOTE THIS ROOM IS USED FOR SESSIONS THAT RUN WEEKLY – SPEAK TO RECEPTIONIST REGARDING BOOKING IT.**

- PROJECTOR/SCREEN
- FLIPCHART BOARD AND PAPER
- WHITEBOARD
- 3 LARGE TABLES
- FIRE EXIT



## SMALL CONSULTATION ROOM (MAX 2)

- 2 ARMCHAIRS
- SMALL TABLE

## OFFICE HOT DESKS (MAX 4)

- 2 DESKS CAN FIT 4 STAFF MEMBERS (MONITORS & KEYBOARDS X3)
- FIRE EXIT





**Honor Oak Youth & Family Hub**  
50 Turnham Road, SE4 2JD  
020 3924 2383  
To book email  
[Family.hubs@lewisham.gov.uk](mailto:Family.hubs@lewisham.gov.uk)

Link to the google map:  
<https://maps.app.goo.gl/pSQrShy8WECHv9QJ7>



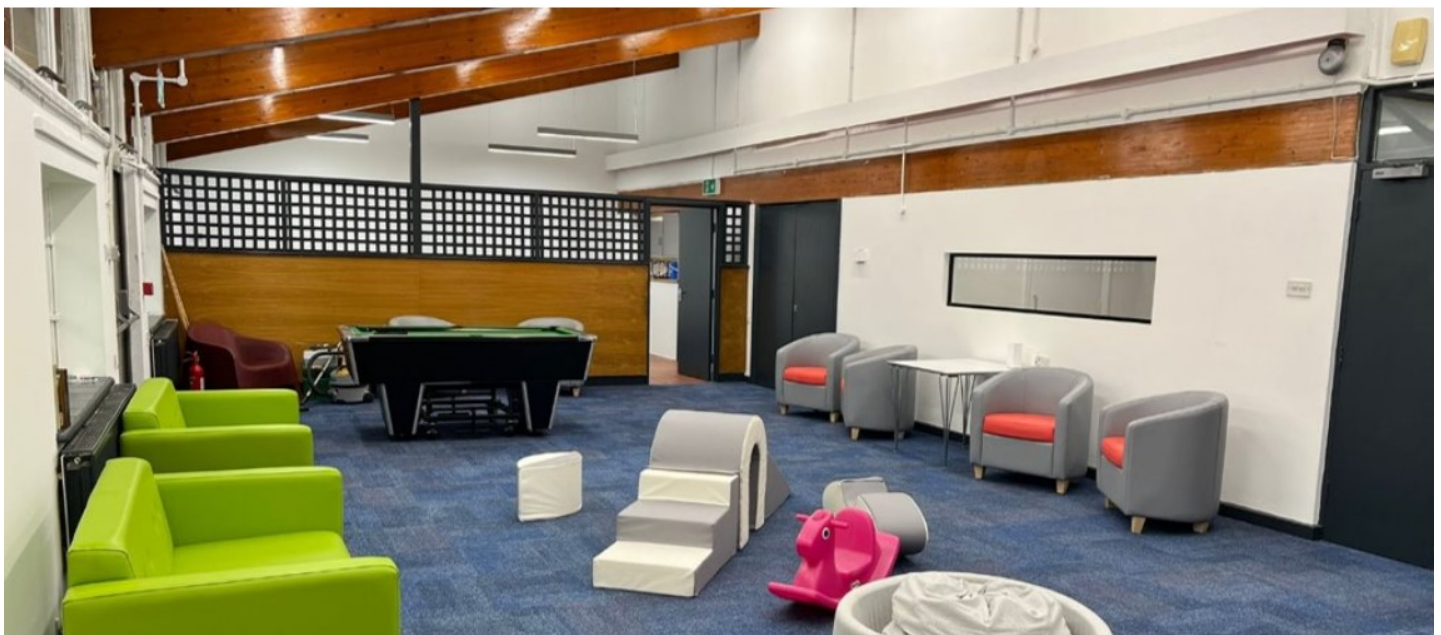
## Building and room information

### Facilities include

#### Rooms

- Multifunctional Space
- Reception Area
- Hot Desk Area
- Meeting Room
- Training Room

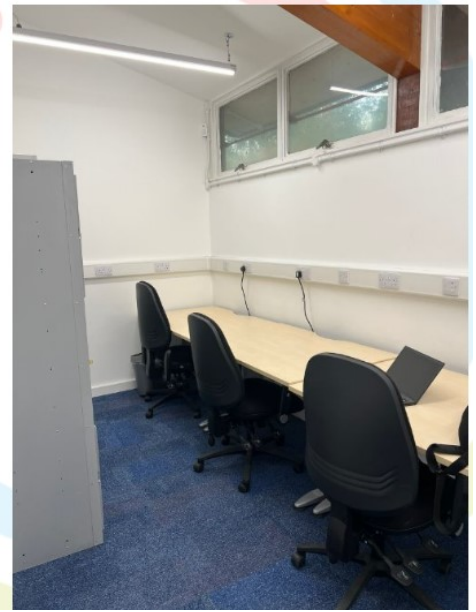
### MULTIFUNCTIONAL SPACE





## ENTERANCE, RECEPTION DESK AND DESK SPACE

- DESKS AND CHAIRS

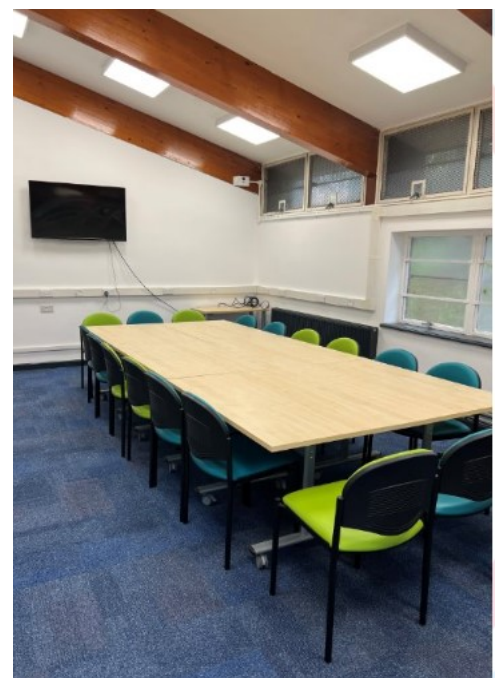


## MEETING ROOM

- TABLE AND CHAIRS CAN SEAT 10

## TRAINING ROOM

- SEATS 20
- CAN CONNECT LAPTOP TO TV SCREEN
- TABLES FOLD AND SEATING CAN BE ARRANGED IN ROWS
- ACCESS TO PLAY STATION WHICH PROJECTS ONTO WALL





## Ladywell Family Hub

30 Rushey Mead, SE4 1JJ  
07720 152904

### To book email

Ladywell.Family.Hub@lewisham.gov.uk

### Link to the google map:

<https://maps.app.goo.gl/PT5aMbHJfLWJ8hHS7>



## Building and room information

- Free onsite parking (limited spaces)
  - No charges for booking
  - Buggy parking outside reception
- Nearby travel from Ladywell Station, 284 bus short walk, Lewisham Centre 15 min walk away

### Facilities include

Toilets x5 including 1 disabled

Water cooler

Fire Exits x3

### Rooms

Playroom/creche with kitchenette

Meeting Room/Training Room

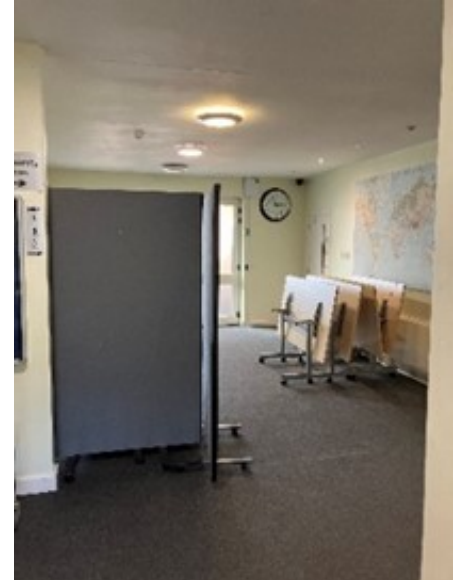
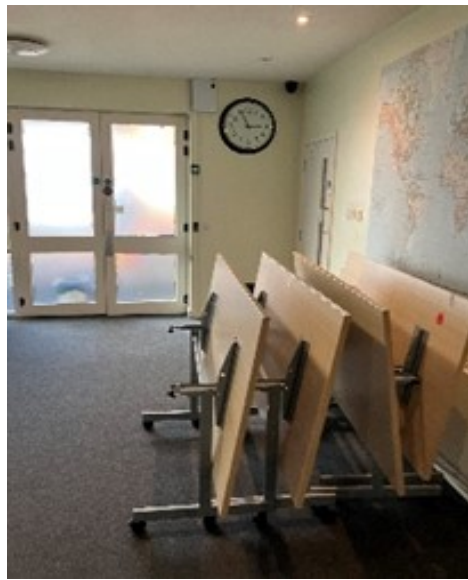
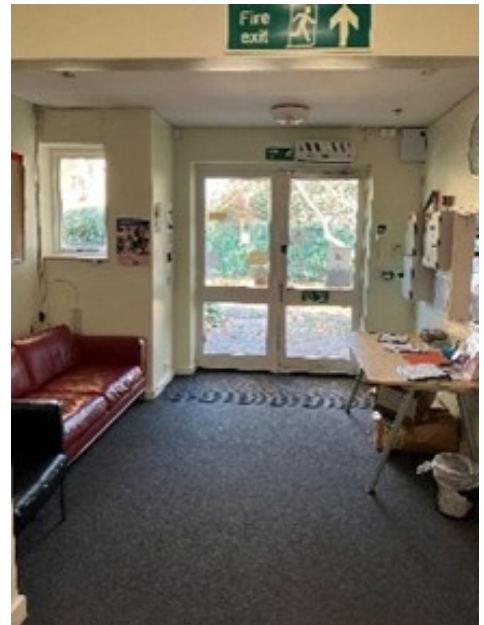
Reception

Office



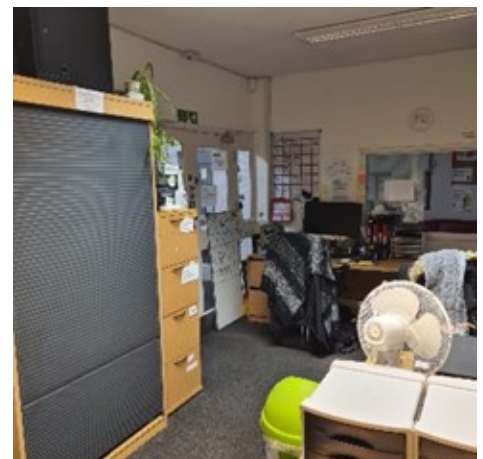
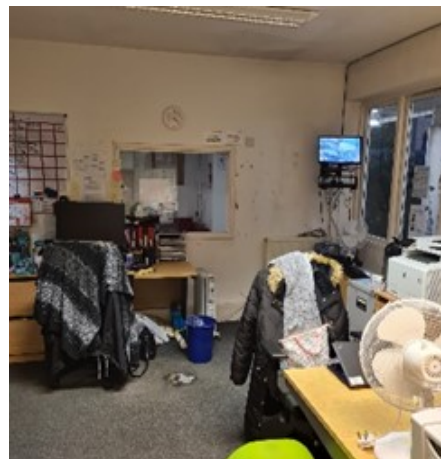
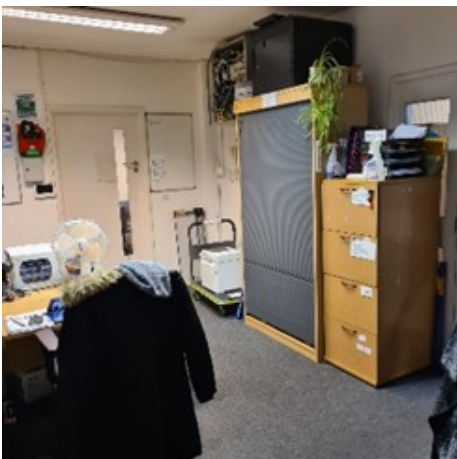
## RECEPTION/FOYER

- SOFA
- HOT DESK AREA
- FIRE EXIT
- TABLES FOR USE (ON REQUEST)



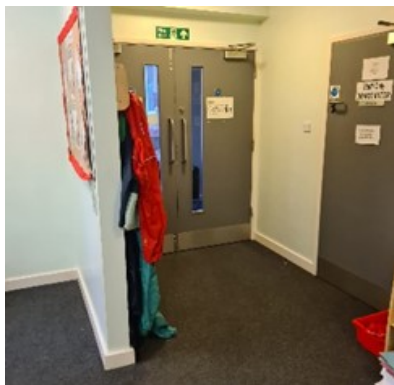
## OFFICE (MAX 2 INC RECEPTIONIST)

1 HOT DESK



## PLAYROOM/CRECHE

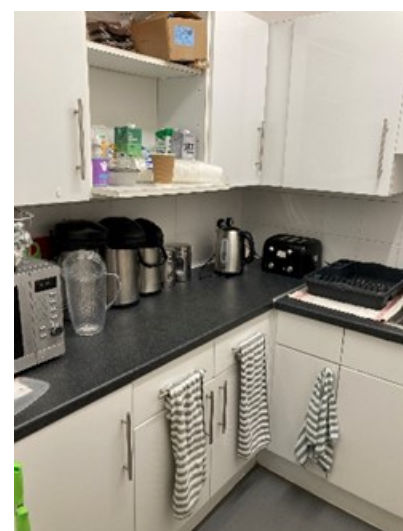
- BREASTFEEDING CHAIRS X2
- TOYS AND OPEN PLAY AREA
- FIRE EXIT



## GARDEN

## KITCHENETTE

- KETTLE
- TOSTER
- MICROWAVE
- FRIDGE
- URNS (AVAILABLE ON REQUEST)





## MEETING ROOM/TRAINING ROOM (MAX 10)

- PROJECTOR (ON REQUEST)
- PROJECTOR SCREEN
- FLIPCHARE BOARD & PAPER (ON REQUEST)



## BABY CHANGING FACILITIES (LOCATED IN DISABLED)





## Kaleidoscope Family Hub

32 Rushey Green, SE6 4JF

**To book email**

Family.Hub@lewisham.gov.uk

**Link to the google map:**

<https://maps.app.goo.gl/pFDEWkQk8djGz3D27>



**More information to follow as the Hub develops**



## Bellingham Family Hub

109 Randlesdown Road, SE6 3HB  
07720 152903

### To book email

Bellingham.Family.Hub@lewisham.gov.uk

### Link to the google map:

<https://www.google.com/maps/place/bellingham+family+hub>



## Building and room information

- Free Parking Nearby Streets
- No Charges for Room Bookings
- Buggy Parking in Buggy Shed
- Nearby Travel—Bellingham Train Station
- Buses Nearby with Links to Lewisham

## Facilities

- Toilets x5 (Including 1 Disabled)
  - Water Cooler
  - Fire Exits x3

## Rooms Ground Floor

- Reception/Foyer
- Reception Office
- Family Therapy Room
- Playroom/Creche
  - Kitchenette
- Meeting Room A
- Meeting Room 1
- Meeting Room 2
- Meeting Room 3
- Meeting Room 4
- Family Hub Area

## ROOMS FIRST FLOOR

- Office 1
- Office 2

### RECEPTION/FOYER

- 2 ARMCHAIRS
- FIRE EXIT
- TOILETS X3, 1 DISABLED

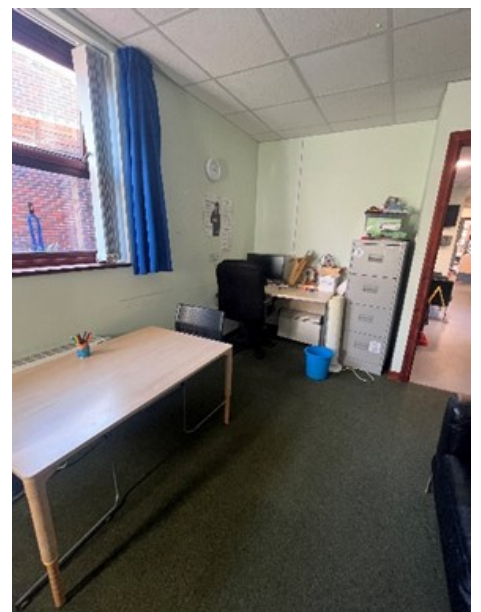
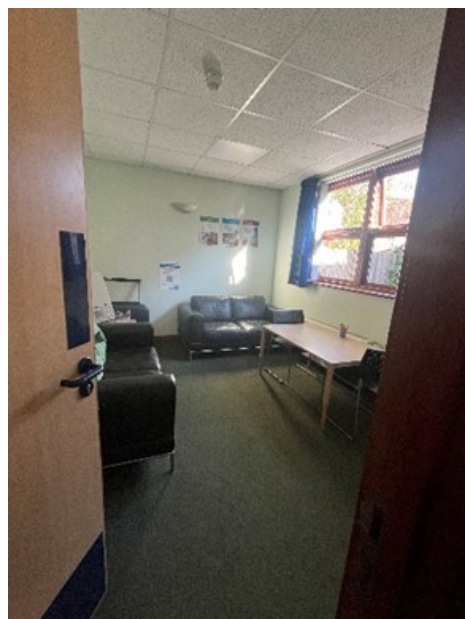


### RECEPTION OFFICE

- 3 HOT DESKS (2 WITH SCREENS)

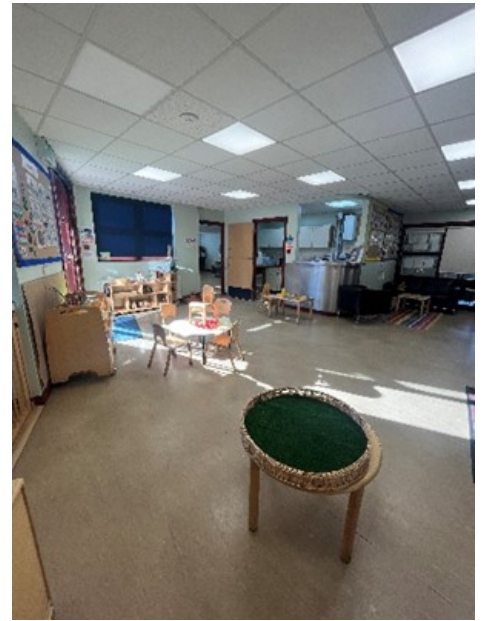
### FAMILY THERAPY ROOM

- 2 SOFAS
- 1 DESK



## PLAYROOM

**PLEASE NOTE THIS ROOM IS USED FOR SESSIONS THAT RUN WEEKLY - SPEAK TO RECEPTIONIST**

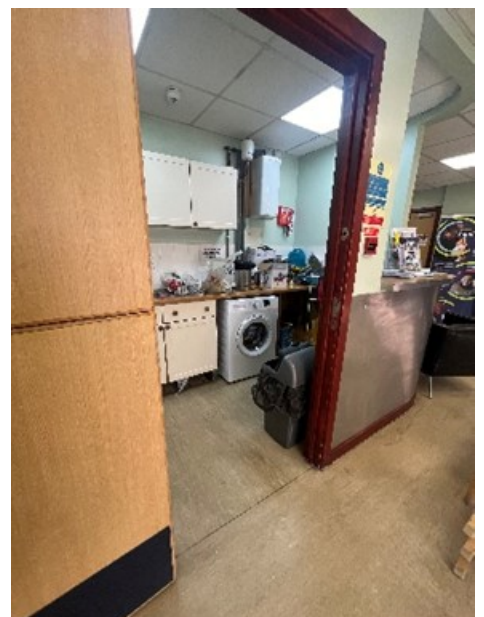


- TOYS AND OPEN PLAY AREA
- TABLES
- BABY CHANGING AREA
- GARDEN



## KITCHENETTE

- FRIDGE FREEZER
- LAUNDRY FACILITIES

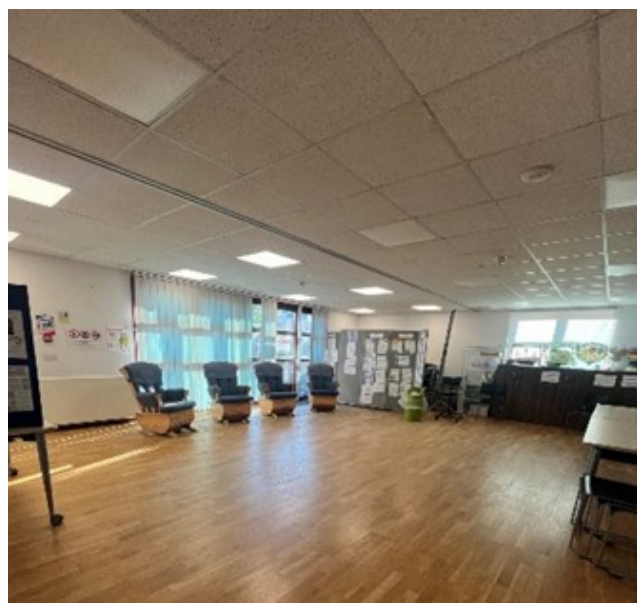




## MEETING ROOM A

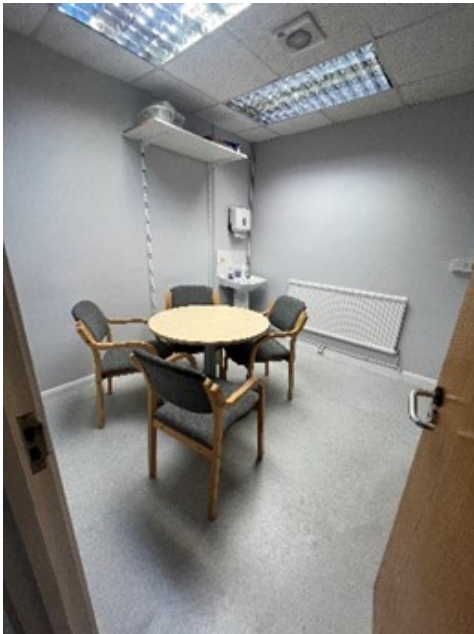
**PLEASE NOTE THIS ROOM IS USED FOR**

- FLIPCHART BOARD AND PAPER (ON REQUEST)
- PROJECTOR SCREEN (ON REQUEST)
- 3 LARGE TABLES
- 4 BREASTFEEDING ROCKING CHAIRS
- STACK OF CHAIRS



**MEETING ROOM 1 (BOOKABLE)**

- BOARD ROOM STYLE ROOM
- 12 CHAIRS
- WHITEBOARD



**MEETING ROOM 2  
(BOOKABLE)**

- DESK AND 4 CHAIRS

**MEETING ROOM 3  
(ONLY BOOKABLE FOR STAFF)**

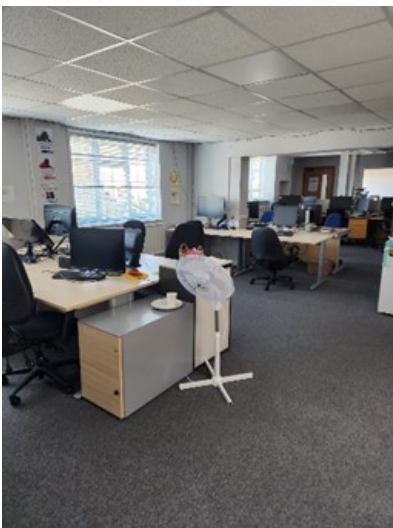
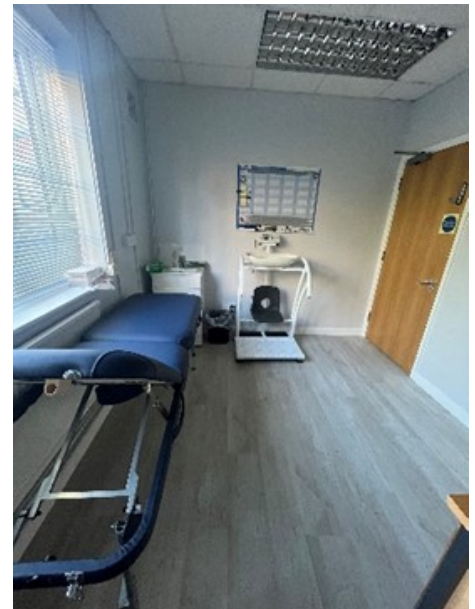
- DESK AND 3 CHAIRS





**MEETING ROOM 4  
(BOOKABLE)**

- WEIGHING SCALES
- CLINICAL BED
- DESK WITH CHAIR



**FAMILY HUB AREA**

- 8 HOT DESKS WITH SCREENS

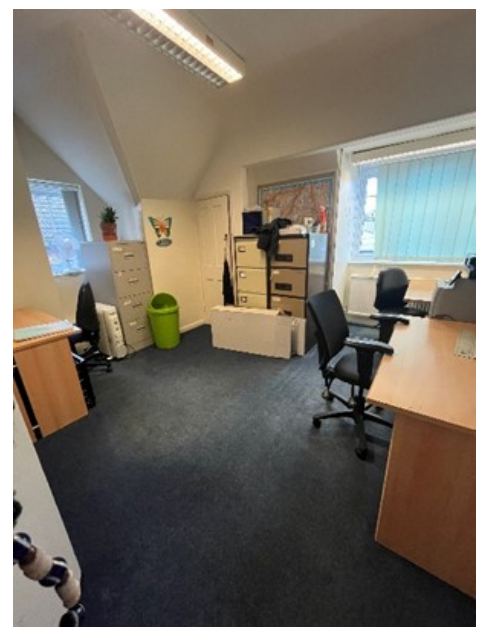


**UPSTAIRS OFFICE 1**

- 1 DESK WITH CHAIR AND SCREEN

**UPSTAIRS OFFICE 2**

- 3 DESKS WITH CHAIRS AND SCREENS







**Downham Family Hub**  
Shroffold Road, BR1 5PD

**To book email**  
Downham.family.hub@lewisham.gov.uk

**Link to the google map:**  
<https://www.google.com/maps/place/downham+family+hub/@51.478115,0.011115,15z>



## General Information

- Free on Street Parking
- No Charge for Rooms
- Buggy Parking Available
- Step Free Access to All Rooms
- Air Con in All Rooms, Both Heating and Cooling

## Rooms

Reception Area  
Blue Bell Room  
Family Thrive Room (Buttercup Room)  
Daisy Office  
Daffodil Room  
Poppy & Tulip Rooms  
Daisy Room

## RECEPTION AREA

- WAITING AREA
- MAIN RECEPTION (9AM-4PM)
- DISABLED TOILET
- BABY CHANGE



## BLUEBELL ROOM CAPACITY 6

- SINK,
  - TABLE,
  - FOLDING CHAIRS
- USED FOR: CHILD HEALTH REVIEWS, MIDWIFE CLINIC, SMALL MEETING ROOM

## FAMILY THRIVE (BUTTERCUP ROOM)

CAPACITY: 6

- DESK
  - CHAIRS
  - MONITORS
  - PRIVACY BLINDS
- USED FOR: HOT DESKING



## DAISY OFFICE

CAPACITY : 5

- DESK
- CHAIR
- 4 TUB CHAIRS

USED FOR: SMALL MEETINGS, HEALTH REVIEWS, COUNSELLING.

## DAFFODIL ROOM

CAPACITY: SEATED 20 STRUCTURED SESSION

- TABLES
- FOLDING CHAIRS
- RUG
- SCREEN
- ROOM DIVIDER

USED FOR: BABY MASSAGE, TODDLER COOKING, ADULT EDUCATION SESSIONS, BABY WEIGH CLINIC, MEDIUM SIZE MEETINGS





**POPPY AND TULIP ROOMS MUST BE BOOKED TOGETHER  
DUE TO CONFIDENTIALITY AND ACCESS ISSUES.**

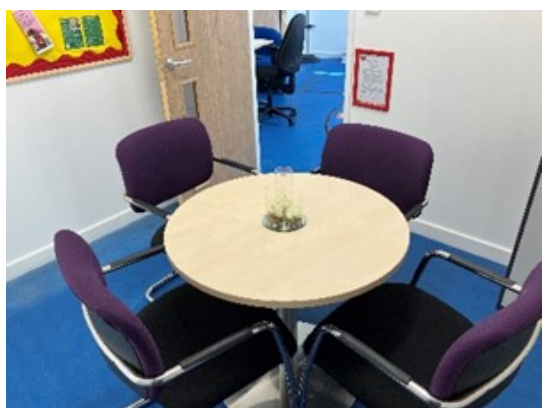


**POPPY ROOM**

CAPACITY: 6

- DESK
- CHAIR
- SOFT SEATING
- TOYS
- TOILET

USED FOR: FAMILY MEETINGS WITH YOUNG



**TULIP ROOM (ACCESSED THROUGH POPPY ROOM)**

CAPACITY: 4

- TABLE AND 4 CHAIRS

USED FOR: SMALL MEETING, COUNSELLING SESSIONS, CONFIDENTIAL MEETINGS

**DAISY ROOM**

CAPACITY: INSIDE AND OUTSIDE SESSIONS 40, INSIDE SESSIONS ONLY 30, SEATED E.G. MEETING OR STRUCTURED PLAY SESSION 20.

- ADULT TOILET
- CHILD'S TOILET
- BABY CHANGE
- OUTSIDE AREA
- BALL POOL
- CARPETED AREA
- SMALL KITCHEN WITH BOILING WATER DISPENSER AND SINK
- PRIVACY BLINDS
- BREASTFEEDING CHAIR
- CHILDREN'S TABLES AND CHAIRS
- ADULT TABLES AND FOLD DOWN CHAIRS
- FLIP CHART.





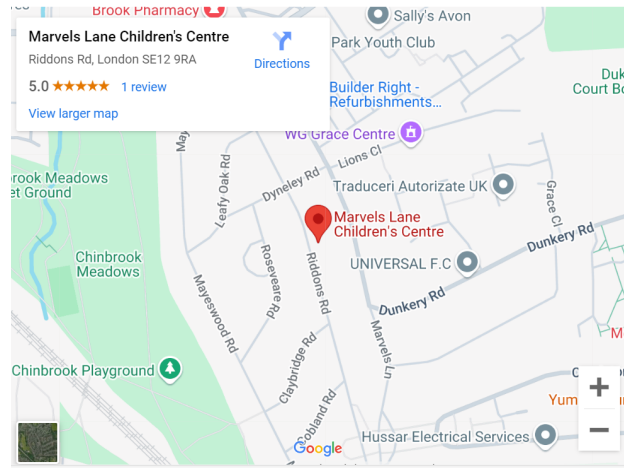


## Marvels Lane Family Hub

65 Riddons Road, SE12 9RA

To book email  
[Family.hubs@lewisham.gov.uk](mailto:Family.hubs@lewisham.gov.uk)

Link to the google map:  
<https://maps.app.goo.gl/45Hqch4Eiqo369Ju5>



**More information to follow as the Hub develops.**