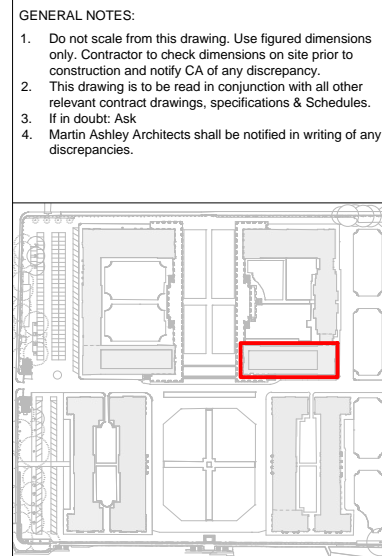
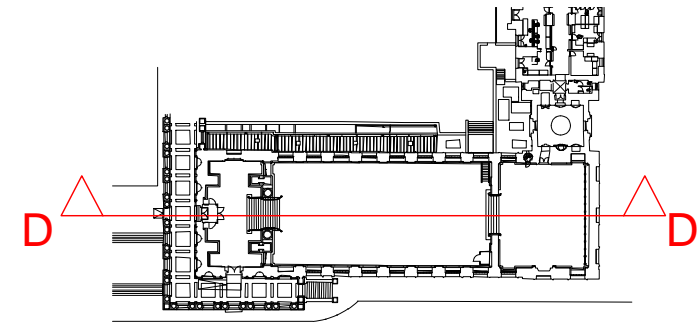







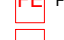







General Notes:

1. Fire beam in Lower hall at 11.9m above vestibule floor;
2. Fire beam in Upper Hall at 8.15m above upper hall floor;
3. Portable Audio Visual near the entrance to Lower Hall, normally kept inside the cupboard;
4. Temporary Stairs Protection (TSP2, 3 and 4) of mandatory use while moving objects in and out of the rooms;
5. Temporary Stairs Protection Ramp (TSP1) allows machinery to enter the vestibule, if needed.



Key

-  Double Socket (13MP?)
-  Single Socket (3 Phase - 63MP - 5 pin)
-  Electric Cupboard
-  PC Tower (Digital Presentation on NR)
-  Fusebox
-  Audio Visuals
-  Humidity Sensor
-  Fire Extinguisher
-  Fire Alarm
-  Fire Beam
-  Fire Beam Direction
-  Temporary Stair Protection (TSP)
-  Fire Exit Sign

Rev.	Date	Reason For Issue	Chk.
B	20.02.24	Extra measurements	KK
A	30.01.24	Feedback update	KK

Status
Preliminary

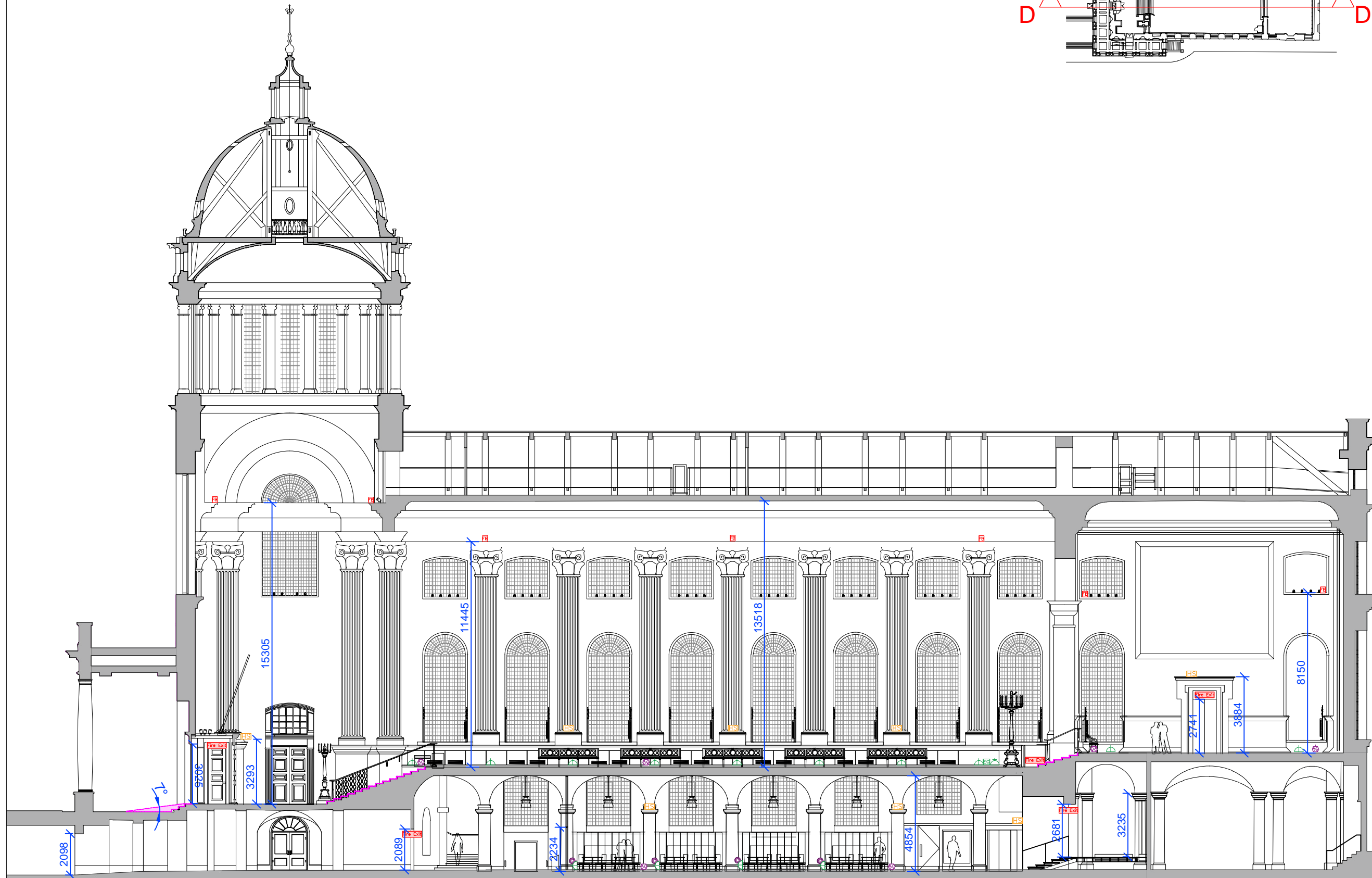
MARTIN ASHLEY ARCHITECTS
 745, 7th Floor, Regal House, 70 London Road, Twickenham, Middlesex, TW1 3QS
 T +44 (0) 20 8948 7788
 www.ma-arch.co.uk

Client
OLD ROYAL NAVAL COLLEGE

Project
**PAINTED HALL
LOWER, UPPER HALL AND
NELSON ROOM SERVICES**

Title
**PAINTED HALL
D-D' SECTION
As Existing**

Date	Scale	Revision
Dec 2023	1:200 @ A3	
Checked By	Drawn By	Revision
KK	CO	
Drawing Number		Revision
2194-99/00/45		B



RIPLEY TUNNEL KING WILLIAM ENTRANCE VESTIBULE KING WILLIAM UNDERCROFT ENTRANCE KITCHEN

PAINTED HALL - D-D' SECTION
As Existing, 1:200

