



Westway Trust Filming Guidelines

A 23-acre site underneath
the A40 (M) flyover in West London





Introduction

The Westway is known well by Location Managers, Scouts & Productions mainly for being one of the only large Unit Bases in North Kensington. The estate covers 23 acres and offers an incredibly diverse range of landscapes and settings encompassing urban, sports, temporary derelict areas and green space to name a few. The estate also boasts several [empty units](#) (depending on availability) and sports facilities (booked directly through the [leisure centre](#)).

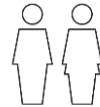
To apply, please submit via **FilmApp [here](#)**.



Technical Specifications

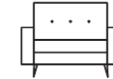
Postcode / what3words:

- Unit Base Entrance W10 6RF / [W3Words ///rested.unit.lofts](#)



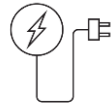
Toilets

Available for within [Leisure Centre](#) (please liaise with them directly)



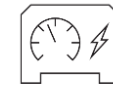
Green Room

Available with the Leisure Centre or empty units or local community facilities.



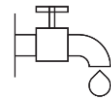
Electricity

No power in Unit Base area



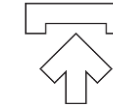
Generators

Restrictions on Red Area (see Unit Base Map).



Water

No water in Unit Base area



Access

24/7 access to the Unit Base. We advise at least two or three base security.



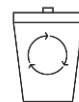
Vehicle Movement

Restrictions on some areas of the site (near residential properties)



Parking

Huge unit base available. For larger shoots. Currently red area on the map is not available for parking.



Waste Disposal

Crews must arrange waste disposal. Any waste must be removed from site by the end of booking



Catering

Food can be purchased and consumed across the estate



Location Conditions

Important: Please note that local residents have asked not to permit filming related to the Grenfell Tower fire on the Westway estate, including around the Wall of Truth (Maxilla Walk), unless under very particular circumstances and where the project is community-led, for memorial and healing purposes. Please enquire for more information.

Other Notes;

- Open entrances must be manned at all times.
- We advise at least two security to on the Unit Base at any time.
- Crew, vehicles, ez-up tents or other equipment must not block fire exits or access hazard areas (highlighted on the map on Page 6).
- All cables must be covered.
- Equipment must not be placed in flower beds or within 5m of tree roots.
- Generator positions must be agreed in advance.
- Please be respectful of the neighbors, community and other tenants of the Westway Estate.
- Staking, pegging and drilling in the ground or the underpass structure is not permitted (without prior consent).
- 5mph speed limit throughout the site.

Rates

Westway Trust are open to all size of productions (including student productions whom have a budget). All filming & photography requires a permit across the estate regardless of the scale and location.

Unit Base

Small (0-5 facility vehicles / 0-20 cars) Day Rate: £1,650.00+VAT / Overnight Rate: £500.00+VAT

Medium (6-10 facility vehicles / 21-30 cars) Day Rate: £1,900.00+VAT / Overnight Rate: £600.00+VAT

Large (11-16 facility vehicles / 31+ cars) Day Rate: £2,100.00+VAT / Overnight Rate: £700.00+VAT

Location fees are calculated based on the type of and needs of the production. We take into consideration the following factors:

- Total amount of people on site (including artists, agency, contributors, entourage etc)
- Amount of time on site (including estimated prep. / strike time and hold days)
- Location(s) required
- Scale of equipment (ie. drones, cranes, generators)
- Level of exclusivity or closure required
- Parking requirements (ie. unit base, tech vehicles, caterers, crew cars)
- Additional spaces required (ie. for green rooms, catering, crew/crowd holding, video village)
- Budget (your maximum budget for this location)
- Type of production (ie. studio vs independent feature, HETV vs unscripted comedy, luxury brand vs independent shop)

To receive a quote, **please email your requirements to locations@filmfixer.co.uk**. We will provide you with an initial, estimated quote to be used as a guideline. Once we receive your application and final proposal, we will supply a final quote along with the **costs of any staffing required to supervise your hire**.

FilmFixer also **charge an administration fee of £75 + VAT per hour of processing time**. Each booking will require a different amount of processing depending on requirements and changes. An estimated guide is as follows:

- Studio feature / HETV in the Museum: 6-10 hours
- Photo shoot in the Museum: 4-6 hours
- Studio feature / HETV in the Park: 4-6 hours
- Photo shoot in the Park: 2-4 hours
- Unit base only: 1 hour

All rates quoted are subject to VAT. Refundable damage deposits are taken for all bookings.

Non-refundable holding deposits are taken for larger scale or longer length bookings. Cleared payment is required before the start of all bookings. **Public liability insurance of a minimum of £5 million** is required for all bookings (drones, significant set dressing, special effects etc may require £10 million +).



Unit Base Map

Entry to the land is found via the south end of Latimer Road Using the following address.

198 Latimer Road, London
W10 6RF

[W3Words ///rested.unit.lofts](http://W3Words:///rested.unit.lofts)

Map Key

Pink – Entrance to the Site

Blue & Green – Unit Base areas

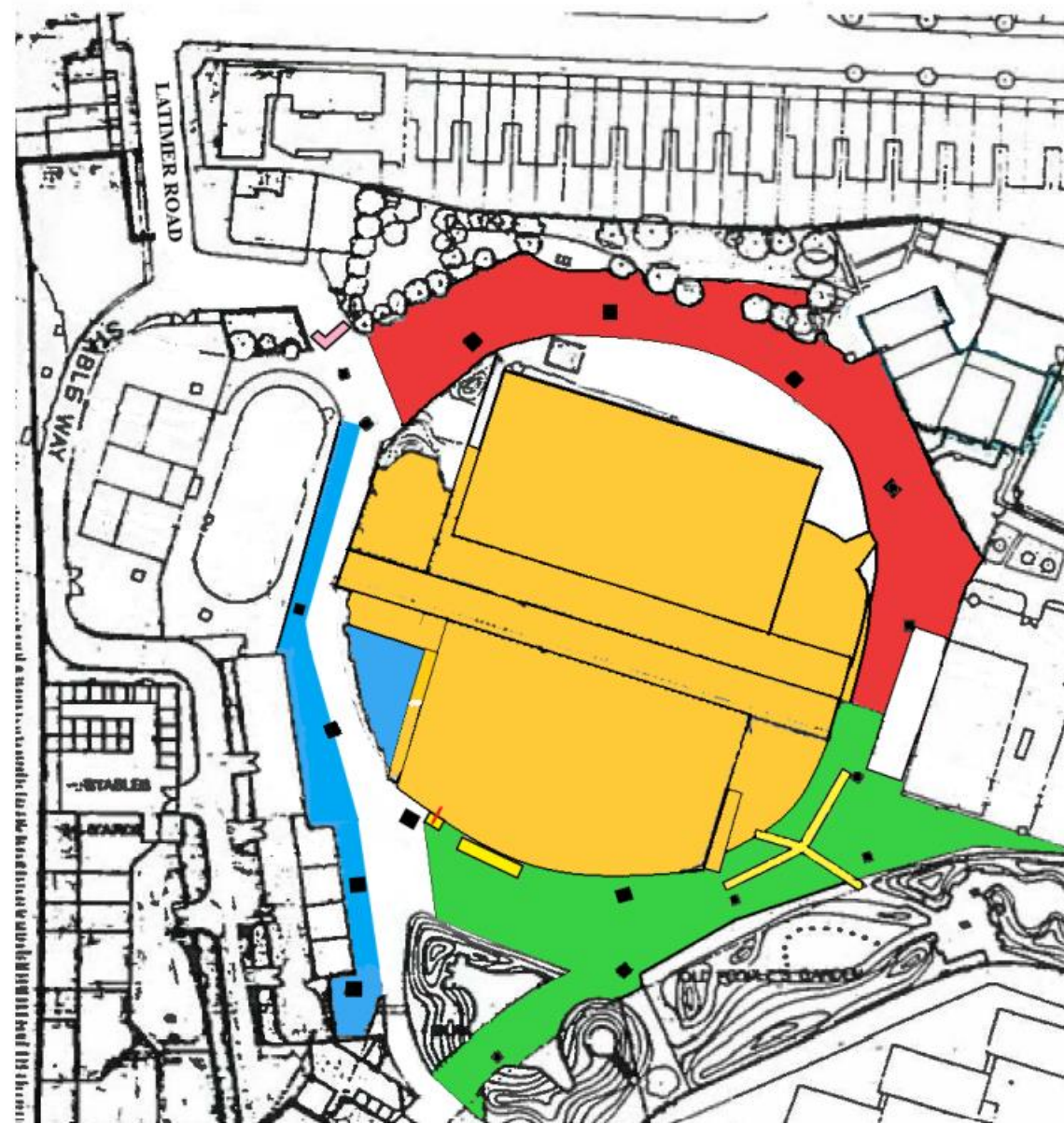
Yellow – Cross Hatched Public Access

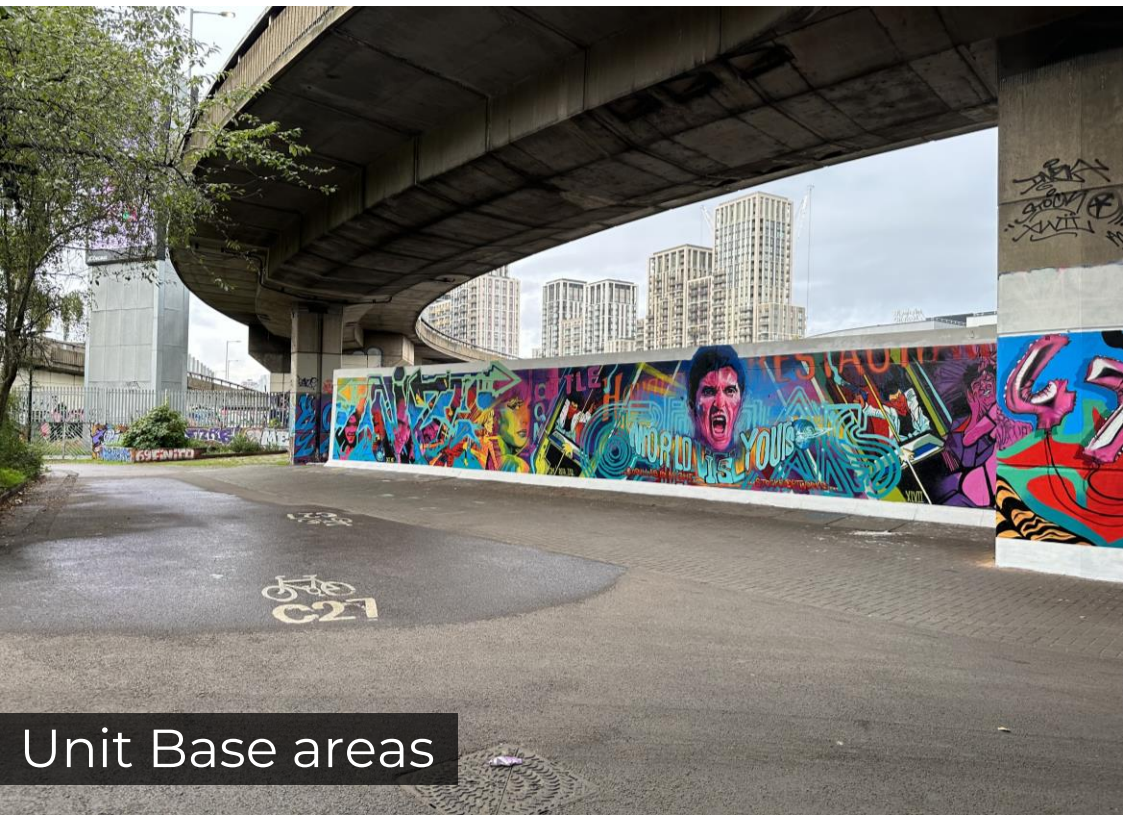
(Do not park over)

Red – No Parking

Mustard – Sports Centre

Please note that public access is still required through the area and provisions should be made to maintain public rights of way. Any generators should be positioned away from the main building. All fire exit doors, entrances, access roads or painted 'No Parking' areas are to be kept clear. 5 mph speed limited onsite at all times





Unit Base areas





Temporary Disused Area (likely to change soon)



Alleyways





Pear Tree Walk





Sports Centre Exterior



Thorpe Close





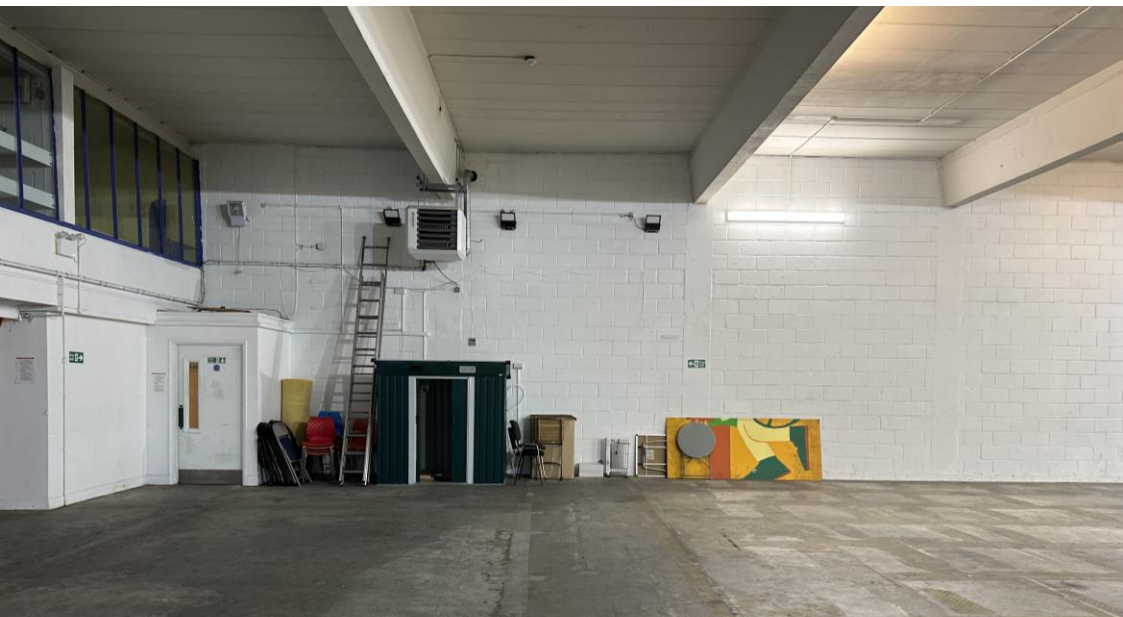
Thorpe Close Units
These are private rented properties, small
bedroom flats located in the area which will be
available for rent and community activities for community
use. For more information or to see a presentation
please contact the Housing Officer on 01753 833333
or visit our website at www.thorpeclose.co.uk

Thorpe Close Units





Empty Nightclub & Comedy Club



Bramley Road Empty Unit
Available as a Production Office or Store
3,200 sq ft with some parking area outside and nearby





Portobello Green

Portobello Green Site Map



RBKC Film Office is managed also by FilmFixer.
info@rbkcfilmoffice.co.uk
020 7620 0391
If you need to apply for a film license please go to [FilmApp](#).





www.filmfixer.co.uk

T: 020 3904 4545

E: locations@filmfixer.co.uk

