



CHARLTON HOUSE



FILMFXR



Introduction

Set in the heart of Greenwich, **Charlton House** is a striking example of Jacobean architecture and one of the best-preserved Grade I listed manor houses in London, offering a rich historical backdrop for film and TV productions. With its grand interiors, original fireplaces, wood panelling, and sweeping staircases, the house provides a versatile setting for period dramas, documentaries, and stylised contemporary shoots.

Charlton House has previously hosted productions such as Guy Ritchie's 2024 action comedy war film *The Ministry of Ungentlemanly Warfare* as well as *Strictly Come Dancing's* Halloween special.

To apply, please submit an application via FilmApp [here](#).

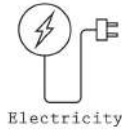
Address: Charlton Road, London, SE7 8RE

what3words: <https://w3w.co/richer.rare.skins>





Technical Specifications



Electricity

Production companies are required to bring their own power supply. Generators are permitted on site providing exact positions are agreed upon in advance.



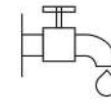
Toilets

Toilets are located on the ground floor near the lifts + a disabled toilet in the Delph Corridor. Large-scale productions to bring a honeywagon on-site.



Catering

The café or green rooms can be hired to host catering. Large-scale productions are permitted to erect a marquee on the rear lawn (additional fees may apply).



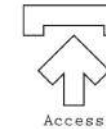
Water

Limited water for bowlers is available from an external tap (charged per 1000L) – Must be agreed with FilmFixer prior to usage.



Vehicle Movement

Vehicles operate on a one-way route onsite. Should vehicles exceeding 7.5T required please discuss with FilmFixer.



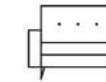
Access

Vehicle access available via Hornfair Road. Access for large techs can be made available via gate entrances on Charlton Park Road and Canberra Road - please note this will need to be arranged and approved by Royal Borough Of Greenwich.



Parking

Parking for under 10 cars is available along the front drive and in the Visitors Car Park. Parking for over 10 cars can be made available on the rear lawn (please note trackway is required).



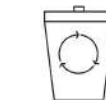
Green Room

The Jenkins Room, Dutch Room and White Room can be used as a green rooms. Please advise on requirements and FilmFixer can propose suitable locations.



Drones

The flying of drones within the grounds is strictly prohibited.



Waste Disposal

All waste must be removed from the site daily.

Grand Salon

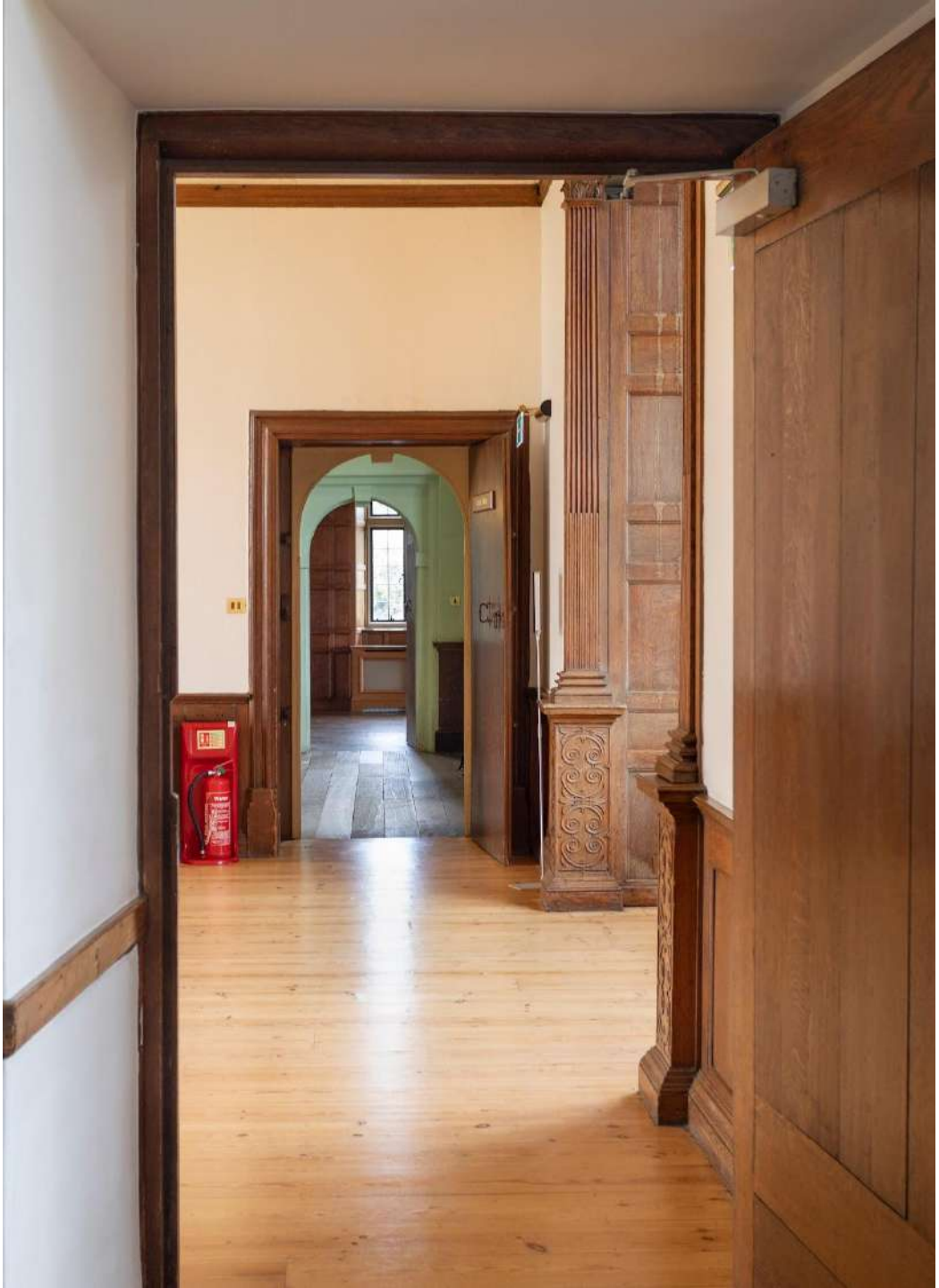
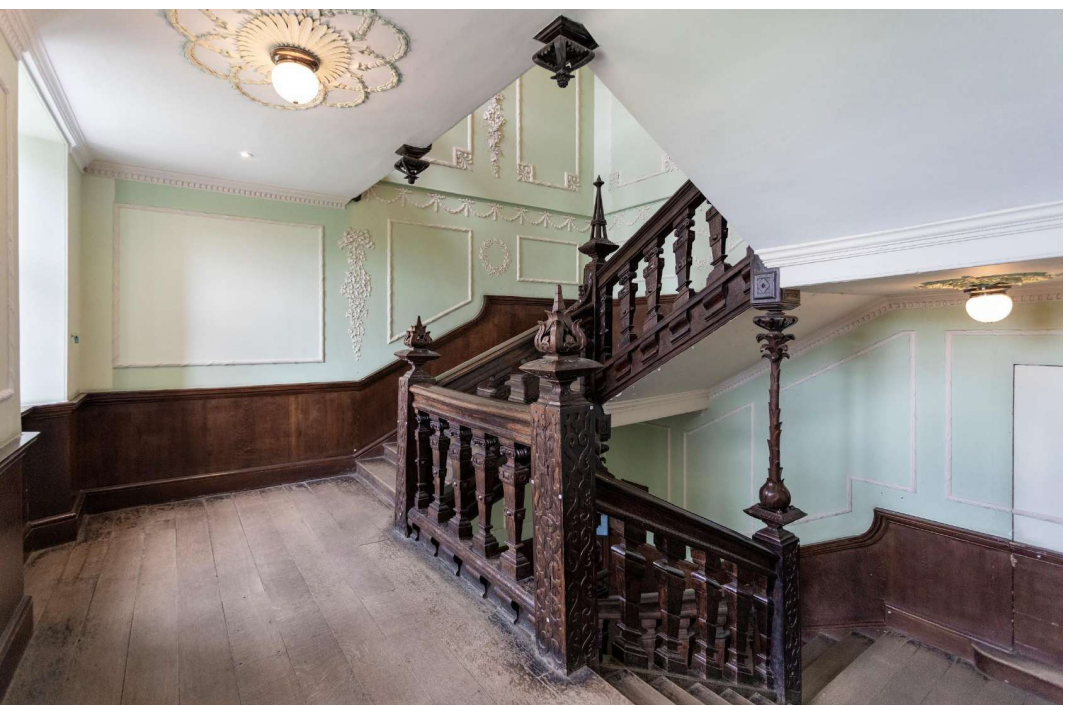




Long Gallery

Old Library





Staircases & Corridors

White Room



Dutch Room





Rear House



House Exteriors

Rear Lawn





Entrance

Garden Features





Café & Green Room

Rates



Due to **Charlton House's** extremely busy calendar, we regret that only commercial applications are considered, regardless of the scale and location. As such, we are unable to accept proposals from students or charities that cannot match the minimum rates below:

- Interior – £1,500 + VAT per day
- Garden only – £1000 + VAT per day

Exact rates are calculated based on the type of and needs of the production. We take into consideration the following factors:

- Total amount of people on site (including artists, agency, contributors, entourage etc)
- Amount of time on site (including estimated prep. / strike time and hold days)
- Location(s) required (for shoots in the Palace, which rooms)
- Scale of equipment (ie. drones, cranes, generators)
- Level of exclusivity or closure required
- Parking requirements (ie. tech vehicles, caterers, crew cars)
- Additional spaces required (ie. for green rooms, catering, crew/crowd holding, video village)
- Budget (your maximum budget for this location)
- Type of production (ie. studio vs independent feature, HETV vs unscripted comedy, luxury brand vs independent shop)

We also charge an administration fee of £90 + VAT per hour of processing time. Each booking will require a different amount of processing depending on requirements and changes. An estimated guide is as follows:

- Studio feature / HETV in the House: 6–10 hours
- Photo shoot in the House: 4–6 hours
- Studio feature / HETV in the Gardens: 4–6 hours
- Photo shoot in the Gardens: 2–4 hours

Staffing fees are applicable depending on the scale of the shoot. Productions that require a conservator on site for their shoot is quoted on a case-by-case basis.

To receive a quote, please email your requirements to Charltonhouse@filmfixer.co.uk. We will provide you with an initial, estimated quote to be used as a guideline. Once we receive your application and final proposal, we will supply a final quote along with the costs of any staffing required to supervise your hire. For site activity before 9am and after 5pm, staffing fees will be applicable.

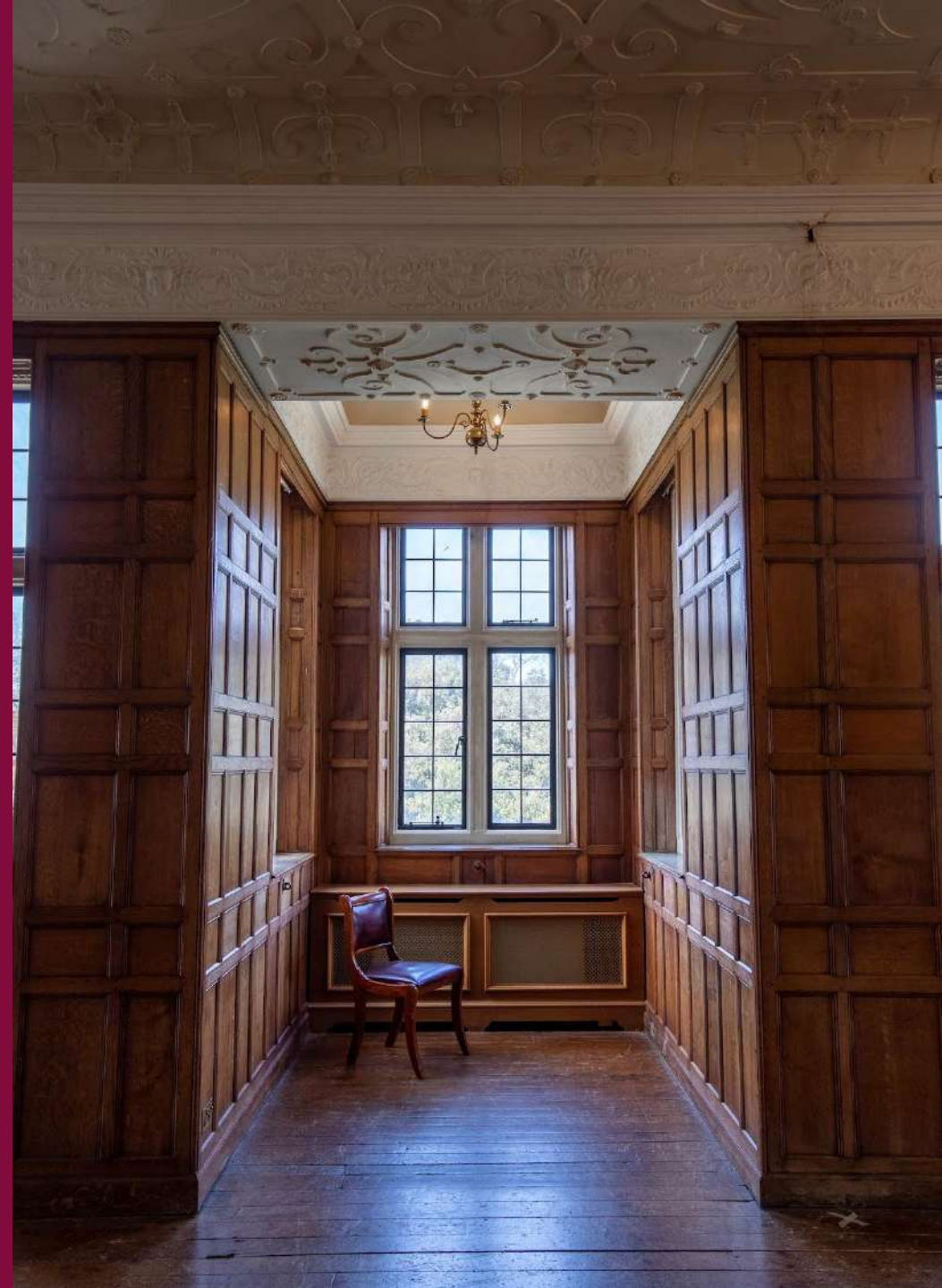
All rates quoted are subject to VAT. Refundable damage deposits are taken for all bookings.

Non-refundable holding deposits are taken for larger scale or longer length bookings. Cleared payment is required before the start of all bookings. Public liability insurance of a minimum of £5 million is required for all bookings (drones, significant set dressing, special effects etc may require £10 million +).

Application Terms and Conditions

- 'Crew size' should include cast, models, artists, presenters, contributors, chaperones and agency.
- Admin fees are calculated per hour of administrative time incurred by FilmFixer. The figures quoted are a minimum charge and may be multiplied accordingly for intensive applications.
- For all applications, cleared payment must be made before the first date of the booking. Payment can be made by card online, or by BACS with proof of payment or remittance.
- Public Liability Insurance with a minimum cover of £5 million is required for all applications. Value may increase to £10 million for shoots in the House, using a UAS drone or undertaking significant set dressing / builds or special effects.
- A location-specific risk assessment is required for all applications. Additional risk assessments, drawings or plans may be required for application-specific works (ie. drone flights, rigs, scaffolding, cranes etc).
- Security deposits are taken for all shoots (equal to the value of 50% of one shoot day location fee). If terms and conditions are not adhered to, the security deposit may not be returned.
- Any additional facilities agreed on the day, which are not included in the location agreement will be charged at an additional cost payable by production or deducted from the damage deposit.
- All applications are subject to FilmFixer's standard Cancellation and Rescheduling Policy. Available upon request. Holding Deposits may be required to secure dates for long, high impact or high value applications.
- A full or partial closure of the Gardens may be required (at cost to the production) if the presence of a production poses a health and safety risk to visitors, if the visitor experience would be affected or if the shoot content is not suitable for visitors to view.

To apply for a permit, please visit [FilmApp](#).



Location Conditions

- Floor protection is required under all equipment and props. Any equipment with legs must have rubber stoppers (or tennis balls) applied.
- No drilling into walls, wood, ceilings, or flooring. Bluetack, cellotape, duct tape, pins, nails, and glue are not to be used to install or fix anything to the walls, ceiling, panelling, or floor.
- Removal of fire equipment, signage etc is permitted however it must be replaced immediately after filming and be in a good operational order.
- Removal of objects on a case-by-case basis. Please advise FilmFixer of requirements.
- Productions are permitted to bring a small generator to site and ensure it is safely positioned and cordoned. Cables must be suitably covered so as not to become a trip hazard.
- Strip lighting and emergency lights cannot be removed or covered unless authorised by FilmFixer in advance.
- Fire alarm system, including sounders, detectors, and call points, cannot be removed or covered unless authorised by FilmFixer in advance.
- Haze machine/atmos, open flames, candles or fires are not permitted due to the sensitivity of the house fire detection system.
- No use of the kitchen or annex spaces unless specifically requested in advance of the shoot.
- Heating is not to be touched by any crew members unless authorised in advance
- Hot food and drink may not be consumed in interior locations except in green rooms and the café.
- Fireplaces must not be painted, varnished or removed. Placing items on mantelpieces is not permitted.
- Staking, pegging and drilling in the ground is not permitted.
- 5mph speed limit throughout the site.





www.filmfixer.co.uk

T: 020 3904 4545

E: charltonhouse@filmfixer.co.uk



FILMFXER