



**Fulham
Palace
House &
Garden**

FULHAM PALACE

FILMFXR

Introduction

Fulham Palace is a treasure trove of architectural styles, featuring the stunning Tudor Courtyard, the historical Porteus Library, the elegant wood paneled Great Hall and spacious Georgian rooms. These remarkable spaces are set within 13 acres of beautiful gardens.

The gardens include a charming conservatory, a serene walled garden, and the striking façade of a Georgian country house, creating a truly enchanting atmosphere.

A large marquee on-site makes it easy to facilitate large-scale filming.

To apply, please submit via **FilmApp [here](#)**.

Address: Bishop's Avenue , London SW6 6EA

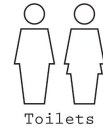
What3Words: [///birds.mimic.crash](https://www.what3words.com/#!/birds.mimic.crash)

**Fulham
Palace
House &
Garden**



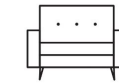


Technical Specifications



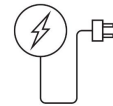
Available inside the Palace & in the car park

Toilets



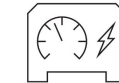
Green Room

The large marquee is available from March to December. The Education Centre and additional rooms within the Palace can be used as green rooms



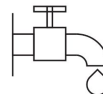
Domestic supply only

Electricity



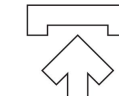
Generators

Positions must be agreed in advance and earthing rods cannot be agreed.



Available in the Palace and in the Gardens

Water



Access

Access must be arranged in advance for the Palace and the Gardens



Waste Disposal

Crews must arrange waste disposal. Any waste must be removed from site by the end of booking.



Parking

4x parking spaces are available with prior arrangement. Please note there is a weight restriction of 3500kg on site



Vehicle Movement

No restrictions on times but vehicles must be walked in by a banksperson

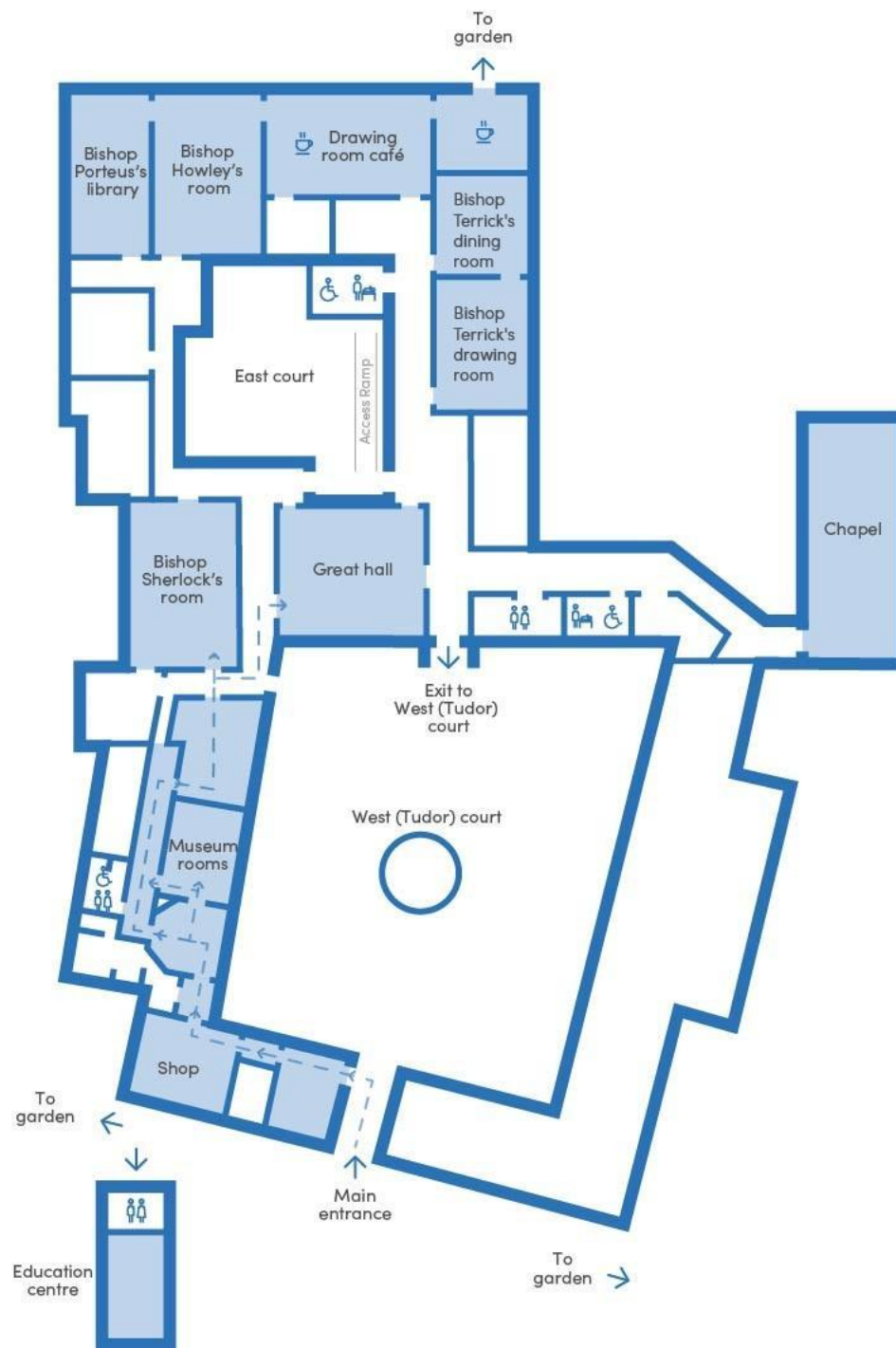


Catering

Food can be consumed in the green room spaces only

The Palace is open to the public, 10:30am-5.00pm.
The Walled Garden is open to the public 10:15am to 4:15pm.

Floor Plan





Great Hall

Chapel





Bishop Porteus's Library & Bishop Howley's Room

Bishop Terrick's Rooms





Bishop's Sherlock Room

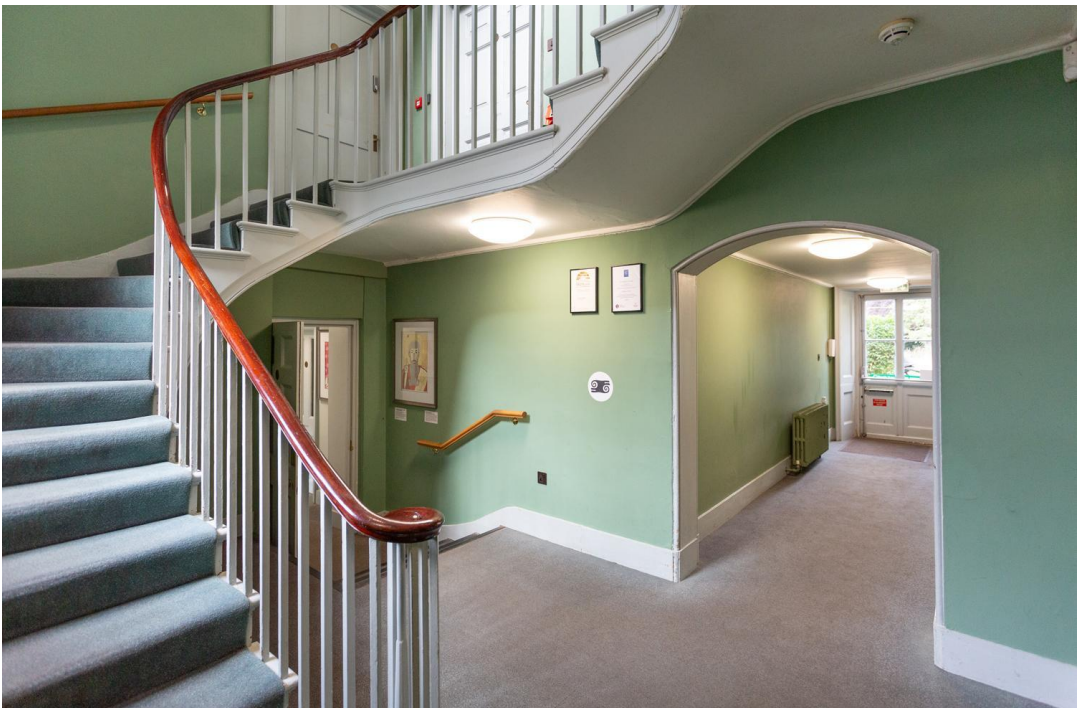


Morning Room



Drawing Room Café

Corridors & Stairways



Tudor Courtyard





Walled Garden Exterior

Walled Garden Interiors





Tree--Canopied Archway

Gardens





Wisteria Lined Pathways



Conservatory

Entrance





Palace Exteriors



Green Rooms

Marquee (seasonal) & Education Centre

Location Conditions

- Open entrances must be manned at all times.
- Crew, vehicles, ezy-up tents or other equipment must not block fire exits.
- Hot food and drink may not be consumed in interior locations except green rooms.
- All cables must be covered.
- Floor protection must be used in interior locations.
- No fixtures, hangings or adhesives on walls, frames or doorways
- Placing items on mantelpieces is not permitted.
- Painting is not permitted without prior written approval.
- Light bulbs can be swapped for period ones.
- Dust, powders, glitter and candles are not permitted.
- High heeled shoes must have heel caps.
- Stanchions should be kept in place.
- Furniture must be lifted, not dragged.
- Fresh flowers, plants and/or foliage must be approved in advance.
- Weight limit, across the site, of approximately 3,500kg.
- Lighting must be kept away from combustible materials and fragile surfaces.
- Hazers, smoke machines, steamers hairspray etc must not be used near walls or heritage items. Windows must be kept open for the duration. With permission only.
- Equipment must not be placed in flower beds or within 5m of tree roots.
- Generator positions must be agreed in advance. Earthing rods are not permitted.
- Use of drones is not permitted on site.
- Staking, pegging and drilling in the ground is not permitted.
- 5mph speed limit throughout the site.



Rates



Due to **Fulham Palace's** extremely busy calendar, we regret that only commercial applications are considered, regardless of the scale and location. As such, we are unable to accept proposals from students or charities that cannot match the minimum rates below:

- Interior – £1,500 + VAT per day
- Garden only – £1000 + VAT per day

Exact rates are calculated based on the type of and needs of the production. We take into consideration the following factors:

- Total amount of people on site (including artists, agency, contributors, entourage etc)
- Amount of time on site (including estimated prep. / strike time and hold days)
- Location(s) required (for shoots in the Palace, which rooms)
- Scale of equipment (ie. drones, cranes, generators)
- Level of exclusivity or closure required
- Parking requirements (ie. tech vehicles, caterers, crew cars)
- Additional spaces required (ie. for green rooms, catering, crew/crowd holding, video village)
- Budget (your maximum budget for this location)
- Type of production (ie. studio vs independent feature, HETV vs unscripted comedy, luxury brand vs independent shop)

We also **charge an administration fee of £90 + VAT per hour of processing time**. Each booking will require a different amount of processing depending on requirements and changes. An estimated guide is as follows:

- Studio feature / HETV in the House: 6-10 hours
- Photo shoot in the House: 4-6 hours
- Studio feature / HETV in the Gardens: 4-6 hours
- Photo shoot in the Gardens: 2-4 hours

Staff fees are £25+VAT per hour, outside of normal working hours. Shoots that require a conservator on site for their shoot is quoted on a case-by-case basis

To receive a quote, please email your requirements to Fulhampalace@filmfixer.co.uk. We will provide you with an initial, estimated quote to be used as a guideline. Once we receive your application and final proposal, we will supply a final quote along with the costs of any staffing required to supervise your hire. For site activity before 9am and after 5pm, staffing fees will be applicable.

All rates quoted are subject to VAT. Refundable damage deposits are taken for all bookings.

Non-refundable holding deposits are taken for larger scale or longer length bookings. Cleared payment is required before the start of all bookings. Public liability insurance of a minimum of £5 million is required for all bookings (drones, significant set dressing, special effects etc may require £10 million +).

Application Terms and Conditions

- 'Crew size' should include cast, models, artists, presenters, contributors, chaperones and agency.
- Admin fees are calculated per hour of administrative time incurred by FilmFixer. The figures quoted are a minimum charge and may be multiplied accordingly for intensive applications.
- For all applications, cleared payment must be made before the first date of the booking. Payment can be made by card online, or by BACS with proof of payment or remittance.
- Public Liability Insurance with a minimum cover of £5million is required for all applications. Value may increase to £10million for shoots in the House, using a UAS drone or undertaking significant set dressing / builds or special effects.
- A location-specific risk assessment is required for all applications. Additional risk assessments, drawings or plans may be required for application-specific works (ie. drone flights, rigs, scaffolding, cranes etc).
- Security deposits are taken for all shoots (equal to the value of 50% of one shoot day location fee). If terms and conditions are not adhered to, the security deposit may not be returned.
- Any additional facilities agreed on the day, which are not included in the location agreement will be charged at an additional cost payable by production or deducted from the damage deposit.
- All applications are subject to FilmFixer's standard Cancellation and Rescheduling Policy. Available upon request. Holding Deposits may be required to secure dates for long, high impact or high value applications.
- A full or partial closure of the Gardens may be required (at cost to the production) if the presence of a production poses a health and safety risk to visitors, if the visitor experience would be affected or if the shoot content is not suitable for visitors to view.

To apply for a permit, please visit [FilmApp](#).





www.filmfixer.co.uk

T: 020 3904 4545

E: fulhampalace@filmfixer.co.uk

Fulham
Palace
House &
Garden

FILMFXR