



Primrose Hill Filming Guidelines

The Primrose Hill area has a high volume of location filming. To ensure filming remains tolerable and sustainable for local residents the following guidelines for film parking should be followed.

Residential Area

Large Scale productions (more than 5 crew) will need to consult local residents and businesses in this area at least three weeks before your shoot day.

Please contact:

Camden Film Office

Email: info@camdenfilmoffice.co.uk

Tel: 020 7620 0391

Productions should distribute a filming proposal letter for residents within the affected area of Primrose Hill and liaise with Primrose Hill Community Association regarding a possible donation. Please refer to area map over.

Parking - Technical Vehicles

Only essential technical vehicles (usually 5 or less) will be considered for parking suspension in the area. Unit parking will not be considered in the immediate area, advice on unit parking servicing Primrose Hill is given below.

Suspensions

Suspension of resident only parking bays will not be considered.

Pay & Display/Shared Use parking bays for technical vehicles is restricted to specified bays in the area – please see map over.

A recce is recommended.

Parking - Unit Bases

There are various unit base options within a mile of Primrose Hill.

• Primrose Hill Primary School (arrange during term time)

Princess Road
Primrose Hill
London, NW1 8JL

Contact: Rita Brassington

Email: admin@primrosehill.camden.sch.uk

Tel: 020 7722 8500

• Regent's Park (roadways inside)

The Storeyard
Inner Circle
Regent's Park
London, NW1 4NR

Contact: Niki Duignan

Email: nduignan@royalparks.gsi.gov.uk

Tel: 0300 061 2110/2111

www.royalparks.gov.uk

Alternatives/Doubles

• Film London

Film London have a location library open office hours and can advise on alternative locations in the style of the Primrose Hill area or any other location issues, free of charge.

Email: locations@filmlondon.org.uk

Tel: 020 7613 7676

www.filmlondon.org.uk

• Camden Film Office

Represented by FilmFixer

Tel: 020 7620 0391

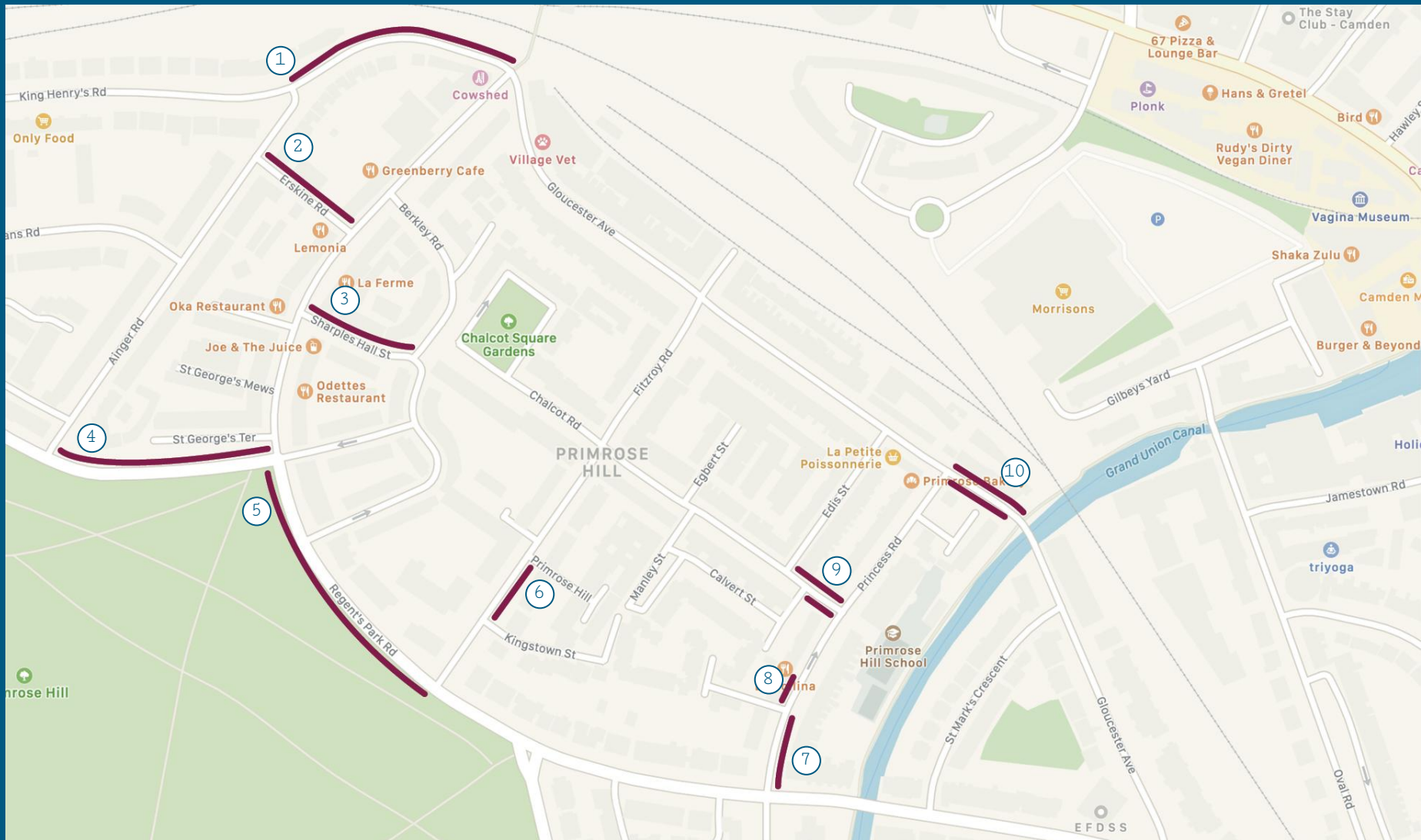
Mob: 07919 002 115

Email: info@camdenfilmoffice.co.uk

www.camdenfilmoffice.co.uk



CAMDEN



Suspensible Parking Bays

- | | | | |
|----|--|-----|---|
| 1. | 18 Permit Holder Bays and 2 Car Club Bays | 6. | 16 Permit Holder Bays |
| 2. | 11 Shared Use Bays (as 7 and 4) | 7. | 13 Permit Holder Bays |
| 3. | 20 Shared Use Bays (as 12 and 8) | 8. | 5 Shared Use Bays |
| 4. | 13 Shared Use Bays and 1 Car Club Bay | 9. | 9 Shared Use Bays (6 on one side, 3 on the other) |
| 5. | 2 Electric Vehicle Bays and 27 Shared Use Bays | 10. | 17 Shared Use Bays (6 on one side, 11 on the other) |

FILMFXER